

## TRSS-RJ45 Series SPD

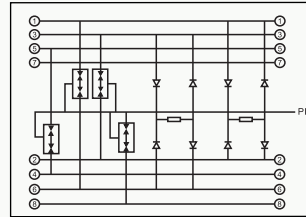
SPD for Data Networks and Ethernet Applications

- Ideally suited for retrofitting, Protection of all lines
- For installation in conformity with the lightning protection zone concept at the boundaries from OB-2 and higher

Product



Basic circuit diagram



Parameter/Type	TRSS-RJ45	TRSS-RJ45/16 For 19" Cabinet Rack	TRSS-RJ45/24 For 19" Cabinet Rack
Material/Ports numbers	PA66/Aluminum/single port	Aluminum/16 ports	Aluminum/24 ports
Nominal volatge		48V	
Maximum operating voltage(d.c.)		50V	
Maximum operating voltage(a.c.)		34V	
Maximum operating voltage(d.c)pair-pai(PoE)		57V	
Nominal Current		1A	
Current flow (8/20 μs)(L-L)		5kA	
Current flow (8/20 μs)(L-PE)		10kA	
Voltage protection level(L-L)		60V	
Voltage protection level(L-PE)		500V	
Cut-off frequency		250MHz	
Insertion loss at 250 MHz(1000Mbps)		≤0,5dB	
Connection (input output)		Rj45 Socket/RJ45 socket	
Pinning		Data: 1/2/3/6;PoE:4/5/7/8	
Response time $t_a$		<25ns	
Degree of Protection		IP20	
Range of operating temperatures(min/max)		-40°C~ +70°C	
Humidity range		5%~95%	
According to standard		EN 61643-21:2012, IEC 61643-21:2011	