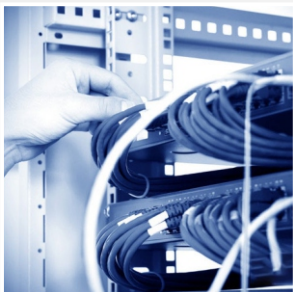


THOR

PROTECTOR OF LIGHTNING PROTECTION
- SINCE 2006 -

Catalogue AC Cylindrical fuse



Enterprise Certificates

As a manufacturer of surge protective devices that pursues high quality, THOR invests a considerable proportion of its annual revenue in innovation, research and development, and international certification to meet the needs of customers in different fields, obtaining more and more certificates to ensure that our SPDs can be distributed in every corner of the world.

RT18-32X 690V

Fit for (φ10x38)mm Fuse link



■ **Specifications**

Rated voltage: 690V

Rated current: 32A

■ **Standard**

IEC60269-6

■ **Typical application**

- General industrial application
- Motor drive
- LV networks
- Electric cabinet
- Solid state relays
- Semiconductor devices
- Power rectifier
- Uninterruptible Power System

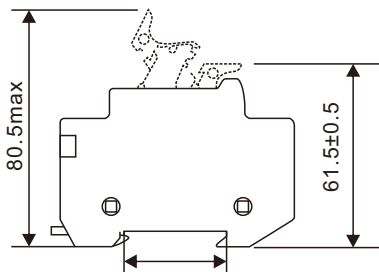
■ **Product features**

- 2A to 32A ampere ratings available
- Full range protection, semiconductor protection and motor protection
- Standardized Cylindrical Construction
- Low power dissipation performance for lower temperature rise
- Din Rail mounting

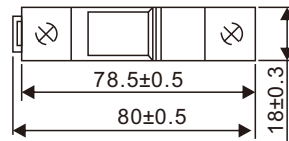
Product parameters

Product code	Rated current	Breaking capacity
RT18-32X	32A	80KA

Product size (mm)



Equipped with TH35-7.5 mounting rail



THPV-30(X)

Note: This base can provide 1P, 2P, 3P, 4P for selection

R015 690V

(φ10x38)mm



■ **Specifications**

Rated voltage: 690V

Rated current: 32A

■ **Standard**

IEC60269-6

■ **Typical application**

- General industrial application
- Motor drive
- LV networks
- Electric cabinet
- Solid state relays
- Semiconductor devices
- Power rectifier
- Uninterruptible Power System

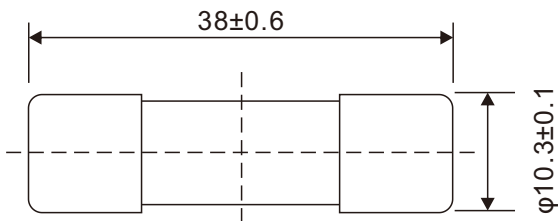
■ **Product features**

- 2A to 32A ampere ratings available
- Full range protection, semiconductor protection and motor protection
- Standardized Cylindrical Construction
- Low power dissipation performance for lower temperature rise
- Din Rail mounting

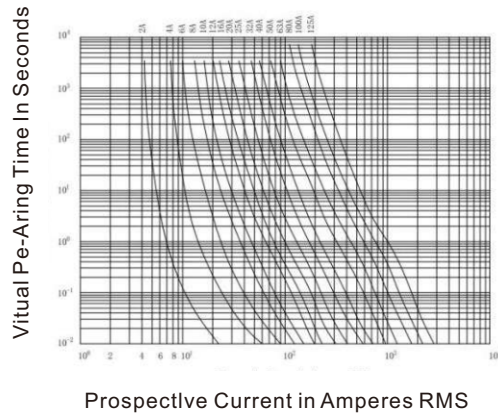
Product parameters

Product code	Rated current	Breaking capacity
R015	2A~32A	80kA

Product size (mm)



Time-current curve



RT18-125 690V

Fit for (φ22x58)mm Fuse link



■ **Specifications**

Rated voltage: 960V
Rated current: 125A

■ **Standard**

IEC60269-6

■ **Typical application**

- General industrial application
- Motor drive
- LV networks
- Electric cabinet
- Solid state relays
- Semiconductor devices
- Power rectifier
- Uninterruptible Power System

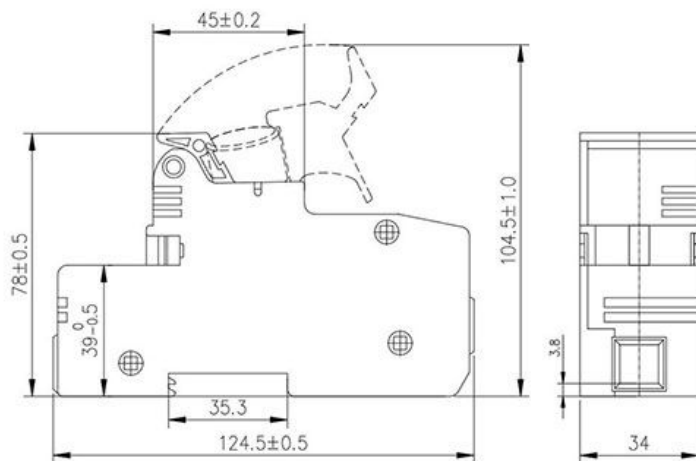
■ **Product features**

- 16A to 125A ampere ratings available
- Full range protection, semiconductor protection and motor protection
- Standardized Cylindrical Construction
- Low power dissipation performance for lower temperature rise
- Din Rail mounting

Product parameters

Product code	Rated current	Breaking capacity
RT18-125	16~125A	80kA

Product size (mm)



R017 690V

(φ22x85)mm



■ **Specifications**

Rated voltage: 690V
Rated current: 125A

■ **Standard**

IEC60269-6

■ **Typical application**

- General industrial application
- Motor drive
- LV networks
- Electric cabinet
- Solid state relays
- Semiconductor devices
- Power rectifier
- Uninterruptible Power System

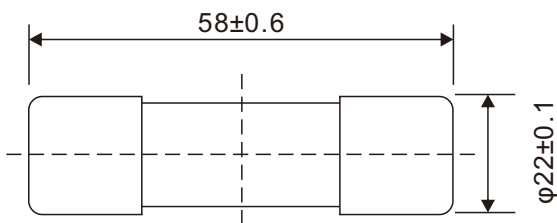
■ **Product features**

Low temperature rise, low power consumption and long service life
Standardized size and compact structure

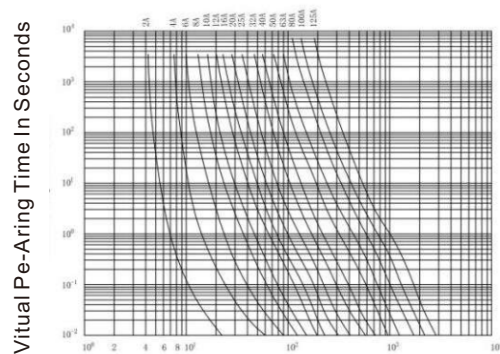
Product parameters

Product code	Rated current	Breaking capacity
R017	16A~125A	80kA

Product size (mm)



Time-current curve



Prospective Current in Amperes RMS



Cherish resources
Be kind to the environment



THOR

Zhejiang THOR Electric Co.,Ltd

ADD: Qianyangdong Industrial Zone Yueqing
Zhejiang Province,China Post code:325604

TEL: +86-577-6267 7705

Main Web: www.thorele.com

Sub Web 1 : www.thorspd.com

Sub Web 2 : www.thorsurge.com

