

Enterprise Certificates

As a manufacturer of surge protective devices that pursues high quality, THOR invests a considerable proportion of its annual revenue in innovation, research and development, and international certification to meet the needs of customers in different fields, obtaining more and more certificates to ensure that our SPDs can be distributed in every corner of the world.

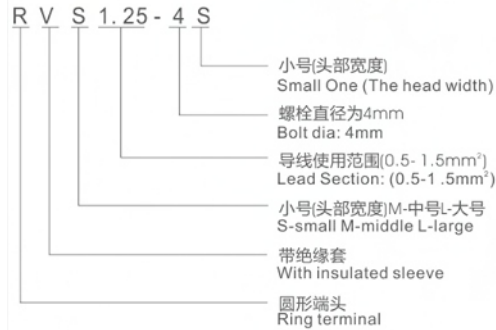
Content

Product Overview

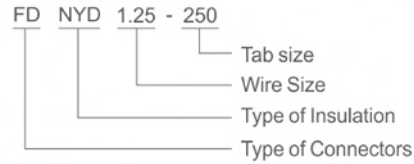
— Naming rules & Description	P01
— Insulated Terminal Series	P02-14
— Nylon-Insulated Terminal Series	P15-16
— Non-Insulated Terminal Series	P17-31
— SC Cable Lug Series	P32-38
— Ferrule Terminal Series	P39-43
— Wire Accessories Series	P44-P45

命名规则 Naming rules

端头类型说明 Terminal Introduction



连接器类型说明 Connectors Introduction



说明 Description

导线号 Cable No.	使用导线截面 Lead Section(mm ²)	美国线规 A.W.G
1.25	0.5-1.5	22-16
2	1.5-2.5	16-14
3.5	2.5-4	14-12
5.5	4-6	12-10
8	6-10	8
14	10-16	6
22	16-25	4
38	25-35	2
60	50-70	1/0
70	70-95	2/0
80	95-120	3/0
100	120-150	4/0
150	150-185	250/300MCM
180	185-240	300/350MCM
200	240-300	400/500MCM
325	300-400	500/600MCM

螺栓通过口直径 Bolt Dia.(mm)	美制螺栓号 USA Bolt No.
3.2	#4
3.7	#6
4.3	#8
5.3	#10
6.4	1/4
8.4	5/16
10.5	3/8
11.0	7/16
13.0	1/2
15.0	9/16
17.0	5/8
18.0	11/16
21.0	3/4
23.0	7/8
25.0	15/16
28.0	1

系列 Series	接插尺寸 Tab Size(w)	
	(Inch)	(mm)
110	— .110×.020 "	2.8×0.5
	— .110×.032 "	2.8×0.8
187	— .187×.020 "	4.75×0.5
	— .187×.032 "	4.75×0.8
205	— .205×.020 "	5.2×0.5
	— .205×.032 "	5.2×0.8
250	— .250×.032 "	6.35×0.8
	— .312×.032 "	8.0×0.8
375	— .375×.047 "	9.4×1.2



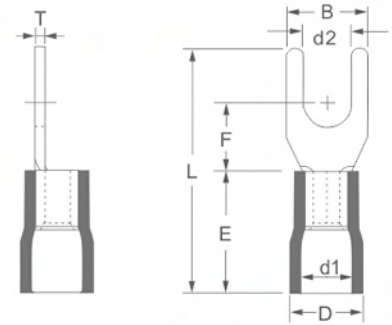
THOR

绝缘端子系列

Insulated Terminal Series

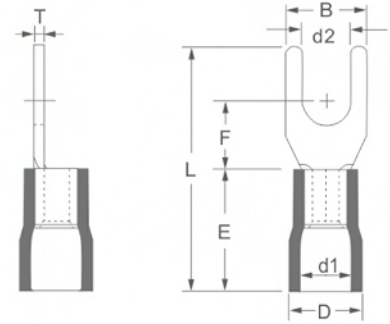


叉形绝缘端子
PVC-Insulated Fork Terminal



型号 ITEM NO.	STUD SIZE 美制螺栓号 螺栓口直径		尺寸 DIMENSION mm							包装 PCS/ PACK	颜色 COLOR	说明 EXPLANATION
	American	Metric d2	B	F	L	E	D	d1	T			
SV3.5-3	#4	3.2	8.0	7.0	25.3	13.0	7.8	6.4	1.0	500	● 黑 Black	导线截面:2.5~4mm ² (美国线规14~12) 最大电流: I _{max} =37A 材质:紫铜 绝缘套管: PVC
SV3.5-3.5	#6	3.7										
SV3.5-4	#8	4.3										
SV3.5-5S	#10	5.3										
SV3.5-6S	1/4	6.5	9.0	7.5	26.0							
SV3.5-6L	1/4	6.5	12.0	9.1	28.5							
SV3.5-8	5/16	8.5	14.0	11.5	30.8							
SV3.5-10	3/8	10.5	17.5	12.5	33.5							
SV5.5-3	#4	3.2	8.3	7.5	26.0	13.3	8.2	6.5	1.0	500	● 黄 Yellow	导线截面:4~6mm ² (美国线规12~10) 最大电流: I _{max} =48A 材质:紫铜 绝缘套管: PVC
SV5.5-3.5	#6	3.7										
SV5.5-4S	#8	4.3										
SV5.5-4L	#8	4.3	8.9		26.5							
SV5.5-5	#10	5.3	9.0	26.0								
SV5.5-6S	1/4	6.5										
SV5.5-6L	1/4	6.5	12.0	12.0	31.6							
SV5.5-8	5/16	8.5	14.0									
SV5.5-10	3/8	10.5	17.5	12.5	33.5							

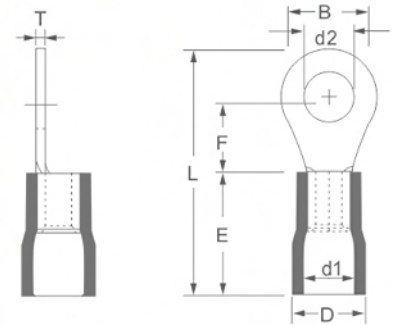
叉形绝缘端子
PVC-Insulated Fork Terminal



型号 ITEM NO.	STUD SIZE 美制螺栓号 螺栓口直径		尺寸 DIMENSION mm							包装 PCS/ PACK	颜色 COLOR	说明 EXPLANATION			
	American	Metric d2	B	F	L	E	D	d1	T						
SV8-4S	#8	4.3	8.0	7.2	30.0	15.5	10.2	8.3	1.2	500	● 红 Red	导线截面:8~10mm ² (美国线规8) 最大电流: I _{max} =62A 材质:紫铜 绝缘套管: PVC			
SV8-4M	#8	4.3	9.0	7.5	30.5										
SV8-4L	#8	4.3	10.5	9.0	30.0										
SV8-5S	#10	5.3	9.0	7.5	28.2										
SV8-5M	#10	5.3			30.5										
SV8-5L	#10	5.3	10.8	7.2	30.0										
SV8-6	1/4	6.5													
SV8-8	5/16	8.5											14.5	11.0	35.0
SV8-10	3/8	10.5	16.0												
SV14-4	#8	4.3	9.0	12.0	37.8								21.5	12.0	10.5
SV14-5	#10	5.3	11.0	10.2	38.7										
SV14-6	1/4	6.5													
SV14-8	5/16	8.5	13.8	10.7	39.0										
SV14-10	3/8	10.5	15.9												
SV22-5	#10	5.3	12.8	13.5	44.5	23.5	15.8	13.3	1.8	100	● 黄 Yellow	导线截面:16~25mm ² (美国线规4) 最大电流: I _{max} =115A 材质:紫铜 绝缘套管: PVC Lead Section: 16~25mm ² (A.W. G.4) Max Current:I _{max} =115A Material;Copper Insulation: PVC			
SV22-6	1/4	6.5													
SV22-8S	5/16	8.5													
SV22-8	5/16	8.5											16.5	13.7	45.0
SV22-10	3/8	10.5													

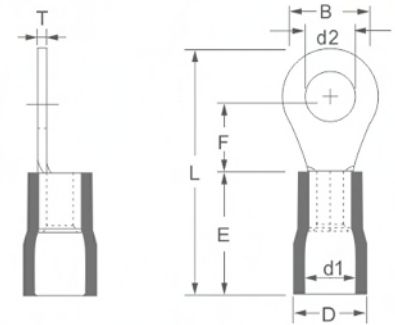
SV Series

圆形绝缘端子
PVC-Insulated Ring Terminal



型号 ITEM NO.	STUD SIZE 美制螺栓号 螺栓口直径		尺寸 DIMENSION mm							包装 PCS/ PACK	颜色 COLOR	说明 EXPLANATION
	American	Metric d2	B	F	L	E	D	d1	T			
RV1.25-3	#4	3.2	5.7	5.0	18.3	10.3	6.0	4.6	0.7	1000	● 红 Red	导线截面:0.5~1.5mm ² (美国线规22~16) 最大电流: I _{max} =19A 材质:紫铜 绝缘套管: PVC Lead Section: 0.5~1.5mm ² (A.W. G.22-16) Max Current:I _{max} =19A Material:Copper Insulation: PVC
RV1.25-3.5S	#6	3.7										
RV1.25-3.5M	#6	3.7	6.6	6.3	20.0							
RV1.25-3.5L	#6	3.7	8.0	7.0	21.3							
RV1.25-4S	#8	4.3	6.6	6.3	20.0							
RV1.25-4L	#8	4.3	8.0	7.0	21.3							
RV1.25-5S	#10	5.3										
RV1.25-5L	#10	5.3	9.5	7.5	22.5							
RV1.25-5LL	#10	5.3	11.6	11.3	27.3							
RV1.25-6S	1/4	6.5	9.5	7.5	22.5							
RV1.25-6L	1/4	6.5	11.6	11.3	27.3							
RV1.25-8	5/16	8.5										
RV1.25-8L	5/16	8.5	13.7	13.9	31.2							
RV1.25-10	3/8	10.5										
RV1.25-10L	3/8	10.5	18.0	15.0	34.3							
RV1.25-12	1/2	13.0										
RV1.25-14	9/16	15.0	27.0	21.0	44.8							
RV1.25-16	5/8	17.0										
RV1.25-18	11/16	19.0										
RV1.25-20	3/4	21.0										

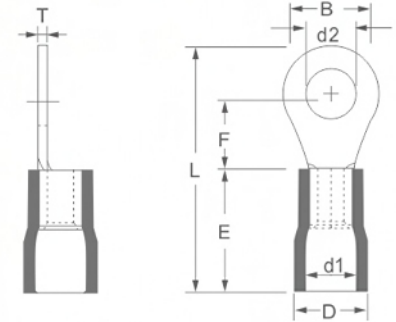
圆形绝缘端子
PVC-Insulated Ring Terminal



型号 ITEM NO.	STUD SIZE 美制螺栓号 螺栓口直径		尺寸 DIMENSION mm							包装 PCS/ PACK	颜色 COLOR	说明 EXPLANATION
	American	Metric d2	B	F	L	E	D	d1	T			
RV2-3	#4	3.2	6.6	4.3	17.8	10.3	6.6	5.2	0.8	1000	● 蓝 Blue	导线截面:1.5~2.5mm ² (美国线规16~14) 最大电流: I _{max} =27A 材质:紫铜 绝缘套管: PVC Lead Section: 1.5~2.5mm ² (A.W. G.16-14) Max Current:I _{max} =27A Material:Copper Insulation: PVC
RV2-3.5S	#6	3.7		6.3	19.8							
RV2-3.5M	#6	3.7		7.4	21.8							
RV2-3.5L	#6	3.7	8.5	7.4	21.8							
RV2-4S	#8	4.3	6.6	6.3	19.8							
RV2-4L	#8	4.3	8.5	7.4	21.8							
RV2-5S	#10	5.3	9.5	7.4	22.3							
RV2-5L	#10	5.3										
RV2-6S	1/4	6.5	12.0	11.0	26.8							
RV2-6L	1/4	6.5										
RV2-8	5/16	8.5										
RV2-8L	5/16	8.5	13.6	13.9	30.8							
RV2-10	3/8	10.5										
RV2-10L	3/8	10.5	18.2	15.0	34.6							
RV2-12	1/2	13.0										
RV2-14	9/16	15.0										
RV2-16	5/8	17.0	27.0	21.0	44.6							
RV2-18	11/16	19.0										
RV2-20	3/4	21.0										

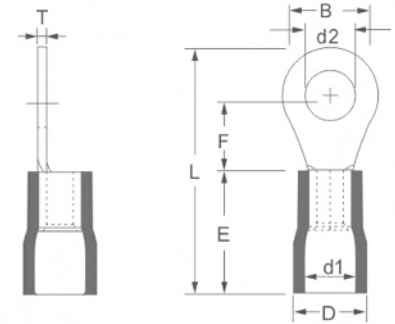
RV Series

圆形绝缘端子
PVC-Insulated Ring Terminal



型号 ITEM NO.	STUD SIZE 美制螺栓号 螺栓口直径		尺寸 DIMENSION mm							包装 PCS/ PACK	颜色 COLOR	说明 EXPLANATION
	American	Metric d2	B	F	L	E	D	d1	T			
RV3.5-3	#4	3.2	8.0	8.0	25.0	13.0	7.8	6.4	1.0	500	● 黑 Black	导线截面:2.5~4mm ² (美国线规14~12) 最大电流: I _{max} =37A 材质:紫铜 绝缘套管: PVC Lead Section: 2.5~4mm ² (A.W. G.14-12) Max Current:I _{max} =37A Material:Copper Insulation: PVC
RV3.5-3.5	#6	3.7										
RV3.5-4	#8	4.3										
RV3.5-4M	#8	4.3	9.5	8.3	27.0							
RV3.5-5S	#10	5.3	8.0	8.0	25.0							
RV3.5-5M	#10	5.3	9.5	8.3	27.0							
RV3.5-5L	#10	5.3	12.0	9.5	28.5							
RV3.5-6	1/4	6.5	15.0	13.5	34.0							
RV3.5-8	5/16	8.5										
RV3.5-10	3/8	10.5										
RV3.5-12	1/2	13.0	19.2	16.0	39.0							
RV5.5-3	#4	3.2	7.2	6.0	22.9	13.3	8.2	6.5	1.0	500	● 黄 Yellow	导线截面:4~6mm ² (美国线规12~10) 最大电流: I _{max} =48A 材质:紫铜 绝缘套管: PVC Lead Section: 4~6mm ² (A.W. G.12-10) Max Current:I _{max} =48A Material:Copper Insulation: PVC
RV5.5-3.5	#6	3.7										
RV5.5-4S	#8	4.3										
RV5.5-4L	#8	4.3	9.5	8.2	26.2							
RV5.5-5	#10	5.3	12.0	10.5	29.6							
RV5.5-6	1/4	6.5										
RV5.5-6M	1/4	6.5										
RV5.5-8	5/16	8.5	15.0	13.5	34.0							
RV5.5-10	3/8	10.5										
RV5.5-12	1/2	13.0										
RV5.5-14	9/16	15.0	32.0	25.2	54.3	200						
RV5.5-16	5/8	17.0										
RV5.5-18	11/16	19.0										
RV5.5-20	3/4	21.0										

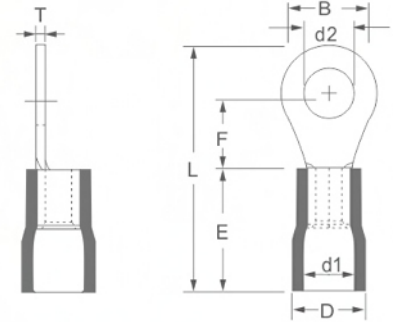
圆形绝缘端子
PVC-Insulated Ring Terminal



型号 ITEM NO.	STUD SIZE 美制螺栓号 螺栓口直径		尺寸 DIMENSION mm							包装 PCS/ PACK	颜色 COLOR	说明 EXPLANATION						
	American	Metric d2	B	F	L	E	D	d1	T									
RV8-4S	#8	4.3	8.8	10.5	30.6	15.5	10.2	8.3	1.2	500	● 红 Red	导线截面:6~10mm ² (美国线规8) 最大电流: I _{max} =62A 材质:紫铜 绝缘套管: PVC Lead Section: 6~10mm ² (A.W. G.8) Max Current:I _{max} =62A Material:Copper Insulation: PVC						
RV8-4L	#8	4.3	12.0	9.3	31.0													
RV8-5S	#10	5.3	8.8	10.5	30.6													
RV8-6S	1/4	6.5	12.0	9.3	31.0													
RV8-8	5/16	8.5	15.0	13.8	36.8													
RV8-10	3/8	10.5																
RV8-12	1/2	13.0	20.0	15.0	40.2													
RV8-14	9/16	15.0	31.7	25.5	56.8					21.5			12.0	10.5	1.5	200	● 蓝 Blue	导线截面:10~16mm ² (美国线规6) 最大电流: I _{max} =88A 材质:紫铜 绝缘套管: PVC Lead Section: 10~16mm ² (A.W. G.6) Max Current:I _{max} =88A Material:Copper Insulation: PVC
RV8-16	5/8	17.0																
RV8-18	11/16	19.0																
RV8-20	3/4	21.0																
RV14-4	#8	4.3	12.0	13.3	40.5													
RV14-5SS	#10	5.3	12.1	11.5	38.0													
RV14-5S	#10	5.3	12.0	13.3	40.5													
RV14-5L	#10	5.3	16.0	14.2	43.5													
RV14-6SS	1/4	6.5	12.1	11.5	38.0													
RV14-6S	1/4	6.5	12.0	13.3	40.5													
RV14-6L	1/4	6.5	31.7	25.5	62.0													
RV14-8	5/16	8.5																
RV14-10	3/8	10.5																
RV14-12	1/2	13.0																
RV14-14	9/16	15.0																
RV14-16	5/8	17.0																
RV14-18	11/16	19.0																
RV14-20	3/4	21.0																

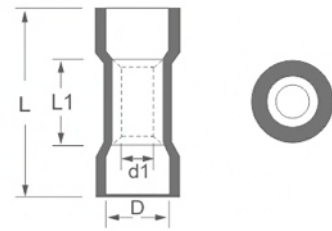
RV Series

圆形绝缘端子
PVC-Insulated Ring Terminal



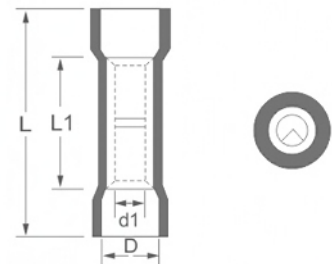
型号 ITEM NO.	STUD SIZE 美制螺栓号 螺栓口直径		尺寸 DIMENSION mm							包装 PCS/ PACK	颜色 COLOR	说明 EXPLANATION
	American	Metric d2	B	F	L	E	D	d1	T			
RV22-4S	#8	4.3	12.1	14.5	44.2	23.5	15.8	13.3	1.8	200	● 黄 Yellow	导线截面:16~25mm ² (美国线规4) 最大电流: I _{max} =115A 材质:紫铜 绝缘套管: PVC Lead Section: 16~25mm ² (A.W. G.4) Max Current:I _{max} =115A Material:Copper Insulation: PVC
RV22-5S	#10	5.3										
RV22-5L	#10	5.3	16.5	13.5	44.5							
RV22-6S	1/4	6.5	12.1	14.5	44.2							
RV22-6L	1/4	6.5	16.5	13.5	44.5							
RV22-8	5/16	8.5										
RV22-10	3/8	10.5										
RV22-12	1/2	13.0										
RV22-14	9/16	15.0	31.7	24.5	63.0							
RV22-16	5/8	17.0										
RV22-18	11/16	19.0										
RV22-20	3/4	21.0										
RV38-5	#10	5.3	15.3	17.4	53.0	28.0	18.8	13.5	1.8	100	● 红 Red	导线截面:30~50mm ² (美国线规2) 最大电流: I _{max} =160A 材质:紫铜 绝缘套管: PVC Lead Section: 30~50mm ² (A.W. G.2) Max Current:I _{max} =160A Material:Copper Insulation: PVC
RV38-6S	1/4	6.5										
RV38-6L	1/4	6.5	22.0	17.7	56.5							
RV38-8S	5/16	8.5	15.3	17.4	53.0							
RV38-8L	5/16	8.5	22.0	17.7	56.5							
RV38-10S	3/8	10.5	15.3	17.4	53.0							
RV38-10L	3/8	10.5	22.0	17.7	56.5							
RV38-11	7/16	11.5										
RV38-12	1/2	13.0										
RV38-14	9/16	15.0										
RV38-16	5/8	17.0	31.7	23.5	66.0							
RV38-18	11/16	19.0										
RV38-20	3/4	21.0										

(短) 形全绝缘中直接头
PVC-Insulated
Short Butt Connector



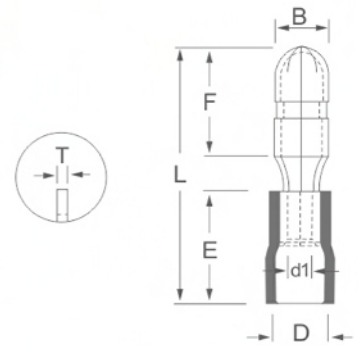
型号 ITEM NO.	导线面积 WIRE SECTION		尺寸 DIMENSION mm				最大电流 MAX CURRENT	包装 PCS/ PACK	颜色 COLOR	说明 EXPLANATION
	A. W. G	mm ²	L1	d1	D	L				
PVT 1.25	22-16	0.5-1.5	8.0	1.7	4.3	16.0	19A	1000	● 红Red	材质:紫铜 绝缘套管: PVC Material:Copper Insulation: PVC
PVT2	16-14	1.5-2.5	8.0	2.3	4.9	16.0	27A	1000	● 蓝Blue	
PVT5.5	10-12	4-6	8.5	3.4	6.3	20.5	48A	500	● 黄Yellow	

(长) 形全绝缘中直接头
PVC-Insulated
Long Butt Connector



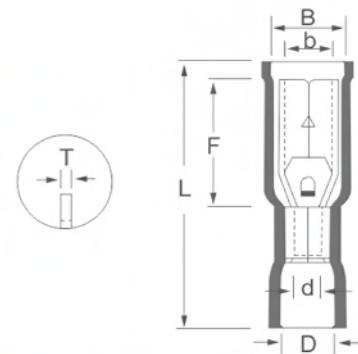
型号 ITEM NO.	导线面积 WIRE SECTION		尺寸 DIMENSION mm				最大电流 MAX CURRENT	包装 PCS/ PACK	颜色 COLOR	说明 EXPLANATION
	A. W. G	mm ²	L1	d1	D	L				
BV0.5	26-22	0.2-0.5	12.0	1.3	3.3	22.0	15A	1000	● 红Red	材质:紫铜 绝缘套管: PVC Material:Copper Insulation: PVC
BV1.25	22-16	0.5-1.5	15.0	1.7	4.3	25.0	19A	1000	● 红Red	
BV2	16-14	1.5-2.5	15.0	2.3	4.9	25.0	27A	1000	● 蓝Blue	材质:紫铜 绝缘套管: PVC Material:Copper Insulation: PVC
BV3.5	14-12	2.5-4	15.0	3.0	6.3	25.0	36A	500	● 黑Black	
BV5.5	12-10	4-6	15.0	3.4	6.7	25.0	48A	500	● 黄Yellow	材质:紫铜 绝缘套管: PVC Material:Copper Insulation: PVC
BV8	8	6-10	21.0	4.5	8.5	32.0	62A	200	● 红Red	
BV14	6	10-16	26.0	5.8	10.5	42.0	88A	200	● 蓝Blue	材质:紫铜 绝缘套管: PVC Material:Copper Insulation: PVC
BV22	4	16-25	29.0	7.7	13.0	50.0	115A	100	● 黄Yellow	
BV38	2	35-50	32.0	9.4	15.3	55.0	160A	100	● 红Red	

子弹形 (公) 绝缘接头
PVC-Insulated
Male Bullet Connector



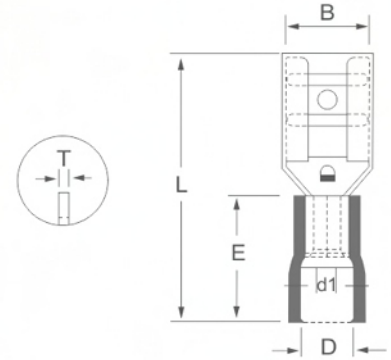
型号 ITEM NO .	尺寸 DIMENSION mm							包装 PCS/ PACK	颜色 COLOR	说明 EXPLANATION
	B	F	L	E	D	d1	T			
MPD1.25-156	4.0	9.0	21.5	10.5	3.8	1.7	0.4	1000	● 红Red	材质:黄铜 绝缘套管: PVC Material;Brass Insulation: PVC
MPD2-156	4.0		21.7	10.5	4.3	2.3			● 蓝Blue	
MPD2-195	5.0		21.7	10.5	4.3	2.3		● 黄Yellow		
MPD5.5-156	4.0		24.0	13.0	5.6	3.4				
MPD5.5-195	5.0		24.0	13.0	5.6	3.4				

子弹形 (母) 绝缘接头
PVC-Insulated
Female Bullet Connector



型号 ITEM NO .	尺寸 DIMENSION mm							包装 PCS/ PACK	颜色 COLOR	说明 EXPLANATION
	B	F	L	b	D	d1	T			
FRD1.25-156	5.2	13.0	23.3	3.9	3.8	1.7	0.4	1000	● 红Red	材质:黄铜 绝缘套管: PVC Material;Brass Insulation: PVC
FRD2-156	5.2	14.0	23.3	3.9	4.3	2.3			● 蓝Blue	
FRD2-195	6.2	14.0	23.3	4.9	4.3	2.3		● 黄Yellow		
FRD5.5-156	5.2	14.0	25.0	3.9	5.6	3.4				
FRD5.5-195	6.2	14.0	25.0	4.9	5.6	3.4				

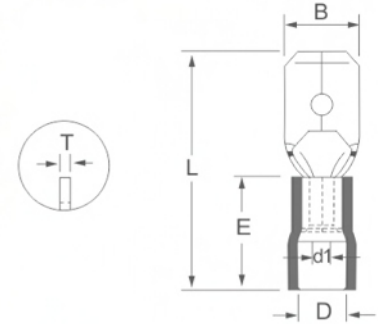
母预绝缘接头
PVC-Insulated
Female Connector



型号 ITEM NO.	接插规格 Nema Tab	尺寸 DIMENSION mm						包装 PCS/ PACK	颜色 COLOR	说明 EXPLANATION							
		B	L	E	D	d1	T										
FDD1.25-110(5)	0.5×2.8	3.3	18.5	10.0	3.8	1.7	0.3	1000	● 红Red	导线截面:0.5~1.5mm ² (美国线规22~16) 最大电流: I _{max} =19A 材质:黄铜 绝缘套管: PVC Lead Section:0.5~1.5mm ² (A.W. G.22~16) Max Current:I _{max} =19A Material:Brass Insulation: PVC							
FDD1.25-110(8)	0.8×2.8						0.35										
FDD1.25-187(5)	0.5×4.75	5.0	19.0				0.4										
FDD1.25-187(8)	0.8×4.75						0.4										
FDD1.25-205	0.5×5.2	5.7	19.0				10.0				4.3	2.3	0.35	1000	● 蓝Blue	导线截面:1.5~2.5mm ² (美国线规16~14) 最大电流: I _{max} =27A 材质:黄铜 绝缘套管: PVC Lead Section:1.5~2.5mm ² (A.W. G.16~14) Max Current:I _{max} =27A Material:Brass Insulation: PVC	
FDD1.25-250	0.8×6.35	6.6	19.8														0.4
FDD1.25-312	0.8×8.0	8.2	23.0														0.5
FDD2-110(5)	0.5×2.8	3.3	18.5	10.0	4.3	2.3	0.3	500	● 蓝Blue	导线截面:1.5~2.5mm ² (美国线规16~14) 最大电流: I _{max} =27A 材质:黄铜 绝缘套管: PVC Lead Section:1.5~2.5mm ² (A.W. G.16~14) Max Current:I _{max} =27A Material:Brass Insulation: PVC							
FDD2-110(8)	0.8×2.8						0.35										
FDD2-187(5)	0.5×4.75	5.0	19.0				10.0				4.3	2.3	0.35	1000	● 蓝Blue	导线截面:1.5~2.5mm ² (美国线规16~14) 最大电流: I _{max} =27A 材质:黄铜 绝缘套管: PVC Lead Section:1.5~2.5mm ² (A.W. G.16~14) Max Current:I _{max} =27A Material:Brass Insulation: PVC	
FDD2-187(8)	0.8×4.75																0.4
FDD2-205	0.5×5.2	5.7	19.0														0.5
FDD2-250	0.8×6.35	6.6	19.8				10.0				4.3	2.3	0.35	500	● 蓝Blue	导线截面:1.5~2.5mm ² (美国线规16~14) 最大电流: I _{max} =27A 材质:黄铜 绝缘套管: PVC Lead Section:1.5~2.5mm ² (A.W. G.16~14) Max Current:I _{max} =27A Material:Brass Insulation: PVC	
FDD2-312	0.8×8.0	8.2	23.7														0.4
FDD2-375	1.2×9.4	9.9	27.6	0.5													
FDD5.5-110(5)	0.5×2.8	3.3	21.0	13.0	5.7	3.4	0.35	1000	● 黄Yellow	导线截面:4~6mm ² (美国线规12~10) 最大电流: I _{max} =48A 材质:黄铜 绝缘套管: PVC Lead Section:4~6mm ² (A.W. G.12~10) Max Current:I _{max} =48A Material:Brass Insulation: PVC							
FDD5.5-110(8)	0.8×2.8						0.4										
FDD5.5-187(5)	0.5×4.75	5.0	22.0				13.0				5.7	3.4	0.4	500	● 黄Yellow	导线截面:4~6mm ² (美国线规12~10) 最大电流: I _{max} =48A 材质:黄铜 绝缘套管: PVC Lead Section:4~6mm ² (A.W. G.12~10) Max Current:I _{max} =48A Material:Brass Insulation: PVC	
FDD5.5-187(8)	0.8×4.75																0.5
FDD5.5-250	0.8×6.35	6.6	23.4														0.5
FDD5.5-312	0.8×8.0	8.2	27.3				13.0				5.7	3.4	0.4	500	● 黄Yellow	导线截面:4~6mm ² (美国线规12~10) 最大电流: I _{max} =48A 材质:黄铜 绝缘套管: PVC Lead Section:4~6mm ² (A.W. G.12~10) Max Current:I _{max} =48A Material:Brass Insulation: PVC	
FDD5.5-375	1.2×9.4	9.9	29.6														0.5

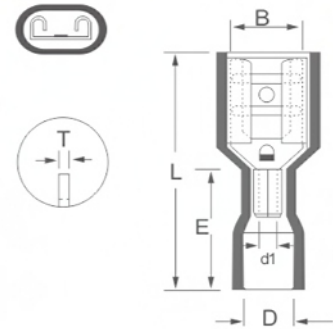
FDD Series

公预绝缘接头
PVC-Insulated
Male Connector



型号 ITEM NO.	接插规格 Nema Tab	尺寸 DIMENSION mm						包装 PCS/ PACK	颜色 COLOR	说明 EXPLANATION
		B	L	E	D	d1	T			
MDD1.25-110(5)	0.5×2.8	2.8	17.7	10.0	3.8	1.7	0.5	1000	● 红Red	导线截面:0.5~1.5mm ² (美国线规22~16) 最大电流: I _{max} =19A 材质:黄铜 绝缘套管: PVC
MDD1.25-110(8)	0.8×2.8						0.8			
MDD1.25-187(5)	0.5×4.75	4.75	20.0				0.5			
MDD1.25-187(8)	0.8×4.75			0.4×2						
MDD1.25-187(8L)	0.8×4.75	4.75	20.0	10.0	4.3	2.3	0.8			
MDD1.25-250	0.8×6.35	6.35	21.0	10.0	3.8	1.7	0.4×2			
MDD2-110(5)	0.5×2.8	2.8	17.7	10.0	4.3	2.3	0.5	1000	● 蓝Blue	导线截面:1.5~2.5mm ² (美国线规16~14) 最大电流: I _{max} =27A 材质:黄铜 绝缘套管: PVC
MDD2-110(8)	0.8×2.8						0.8			
MDD2-187(5)	0.5×4.75	4.75	20.0				0.5			
MDD2-187(8)	0.8×4.75			0.4×2						
MDD2-187(8L)	0.8×4.75	4.75	20.0			3.4	0.8			
MDD2-250	0.8×6.35	6.35	21.0			2.3	0.4×2			
MDD5.5-110(5)	0.5×2.8	2.8	20.0	13.0	5.7	3.4	0.5	1000	● 黄Yellow	导线截面:4~6mm ² (美国线规12~10) 最大电流: I _{max} =48A 材质:黄铜 绝缘套管: PVC
MDD5.5-110(8)	0.8×2.8						0.8			
MDD5.5-187(5)	0.5×4.75	4.75	22.0				0.5			
MDD5.5-187(8)	0.8×4.75			0.4×2						
MDD5.5-250	0.8×6.35	6.35	23.0			0.4×2	500			

母全绝缘接头
Fully-PVC-Insulated
Female Connector



型号 ITEM NO.	接插规格 Nema Tab	尺寸 DIMENSION mm						包装 PCS/ PACK	颜色 COLOR	说明 EXPLANATION	
		B	L	E	D	d1	T				
FDFD1.25-110(5)	0.5×2.8	3.3	20.0	10.0	3.8	1.7	0.3	1000	● 红Red	导线截面:0.5~1.5mm ² (美国线规22~16) 最大电流: I _{max} =19A 材质:黄铜 绝缘套管: PVC	
FDFD1.25-110(8)	0.8×2.8										
FDFD1.25-187(5)	0.5×4.75	5.0	20.5								
FDFD1.25-187(8)	0.8×4.75										
FDFD1.25-205	0.5×5.2	6.5	21.0								
FDFD1.25-250	0.8×6.35	6.6	22.4								0.4
FDFD2-110(5)	0.5×2.8	3.3	20.0	10.0	4.3	2.3	0.3	1000	● 蓝Blue	导线截面:1.5~2.5mm ² (美国线规16~14) 最大电流: I _{max} =27A 材质:黄铜 绝缘套管: PVC	
FDFD2-110(8)	0.8×2.8										
FDFD2-187(5)	0.5×4.75	5.0	20.5								
FDFD2-187(8)	0.8×4.75										
FDFD2-205	0.5×5.2	6.5	21.0								
FDFD2-250	0.8×6.35	6.6	22.7								0.4
FDFD5.5-250	0.8×6.35	6.6	23.0	13.0	5.7	3.4	0.4	500	● 黄Yellow	材质:黄铜 绝缘套管: PVC	Material:Brass Insulation: PVC

FDFD Series

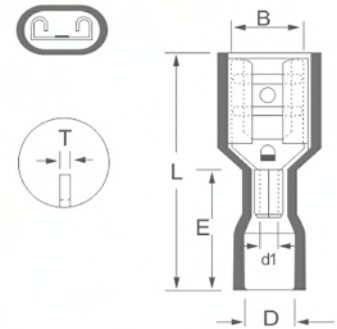
THOR

尼龙绝缘端子系列

Nylon-Insulated Terminal Series

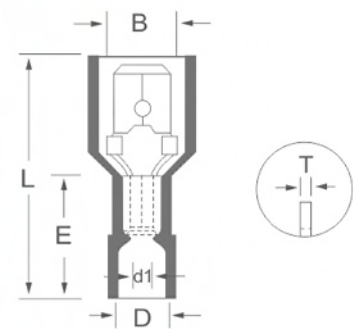


母 (尼龙) 全绝缘接头
Fully-Nylon-Insulated
Female Connector



型号 ITEM NO .	接插规格 Nema Tab	尺寸 DIMENSION mm						包装 PCS/ PACK	颜色 COLOR	说明 EXPLANATION
		B	L	E	D	d1	T			
FDNF1.25-110(5)	0.5×2.8	4.3	18.8	11.0	4.0	1.7	0.3	1000	● 红Red	材质:黄铜 绝缘套管: 尼龙(PA66) 耐温: 105°C 电压: 400V Material:Brass Insulation: Nylon(PA66) Temperature :105°C Voltage: 400V
FDNF1.25-110(8)	0.8×2.8									
FDNF1.25-187(5)	0.5×4.75									
FDNF1.25-187(8)	0.8×4.75									
FDNF1.25-250	0.8×6.35	8.4	22.6	11.0	4.0	2.3	0.35	1000	● 蓝Blue	
FDNF2-187(5)	0.5×4.75	6.2	20.7							
FDNF2-187(8)	0.8×4.75									
FDNF2-250	0.8×6.35	8.4	22.6	11.0	4.5	2.3	0.4	500	● 黄Yellow	
FDNF5.5-250	0.8×6.35	8.6	24.0	13.0	6.3	3.4	0.4			

公 (尼龙) 全绝缘接头
Fully-Nylon-Insulated
Male Connector



型号 ITEM NO .	接插规格 Nema Tab	尺寸 DIMENSION mm						包装 PCS/ PACK	颜色 COLOR	说明 EXPLANATION
		B	L	E	D	d1	T			
MDFN1.25-250	0.8×6.35	6.35	24.0	11.0	4.0	1.7	0.4	500	● 红Red	材质:黄铜 绝缘套管: 尼龙(PA66) 耐温: 105°C 电压: 400V Material:Brass Insulation: Nylon(PA66) Temperature :105°C Voltage: 400V
MDFN2-250	0.8×6.35	6.35	24.0	11.0	4.5	2.3	0.4	500	● 蓝Blue	
MDFN5.5-250	0.8×6.35	6.35	25.0	13.0	6.3	3.4	0.4	500	● 黄Yellow	

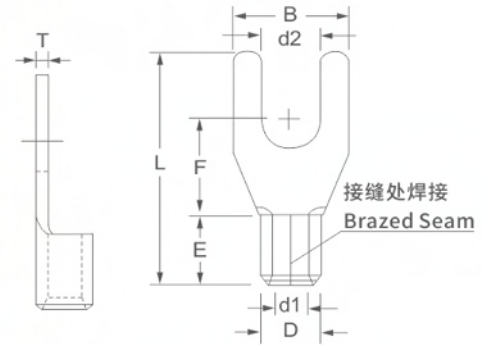
THOR

裸端子系列

Non-Insulated Terminal Series



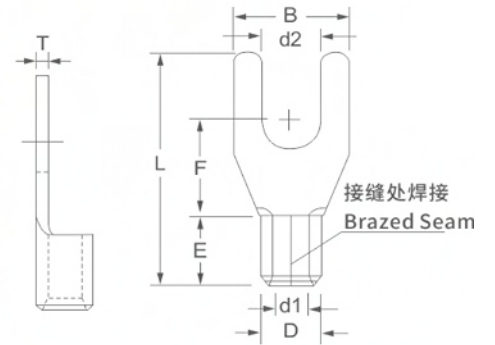
叉形裸端子
Non-Insulated Fork Terminal



型号 ITEM NO.	STUD SIZE 美制螺栓号 螺栓口直径		尺寸 DIMENSION mm							包装 PCS/ PACK	说明 EXPLANATION
	American	Metric d2	B	F	L	E	D	d1	T		
SNB0.5-3	#4	3.2	5.7	5.1	14.2	4.3	2.3	1.3	0.5	1000	导线截面:0.2~0.5mm ² (美国线规26~22) 最大电流: I _{max} =10A 材质:紫铜 Lead Section: 0.5~1.5mm ² (A.W. G.26-22) Max Current:I _{max} =10A Material:Copper
SNB0.5-3.5S	#6	3.7									
SNB0.5-3.5L	#6	3.7									
SNB0.5-4	#8	4.3									
SNB1.25-3	#4	3.2	5.7	6.5	16.0	4.8	3.4	1.8	0.7	1000	导线截面:0.5~1.5mm ² (美国线规22~16) 最大电流: I _{max} =19A 材质:紫铜 Lead Section: 0.5~1.5mm ² (A.W. G.22-16) Max Current:I _{max} =19A Material:Copper
SNB1.25-3.5S	#6	3.7									
SNB1.25-3.5L	#6	3.7									
SNB1.25-4S	#8	4.3									
SNB1.25-4M	#8	4.3	7.2	6.5	16.0	4.8	3.4	1.8	0.7	1000	导线截面:0.5~1.5mm ² (美国线规22~16) 最大电流: I _{max} =19A 材质:紫铜 Lead Section: 0.5~1.5mm ² (A.W. G.22-16) Max Current:I _{max} =19A Material:Copper
SNB1.25-4L	#8	4.3									
SNB1.25-5S	#10	5.3									
SNB1.25-5L	#10	5.3									
SNB1.25-6S	1/4	6.5	9.5	6.5	16.0	4.8	3.4	1.8	0.7	1000	导线截面:0.5~1.5mm ² (美国线规22~16) 最大电流: I _{max} =19A 材质:紫铜 Lead Section: 0.5~1.5mm ² (A.W. G.22-16) Max Current:I _{max} =19A Material:Copper
SNB1.25-6L	1/4	6.5									
SNB1.25-8	5/16	8.5									
SNB2-3	#4	3.2	5.7								
SNB2-3.5S	#6	3.7									
SNB2-3.5L	#6	3.7									
SNB2-4S	#8	4.3									
SNB2-4M	#8	4.3	7.2	6.5	16.0	5.0	4.0	2.3	0.8	1000	导线截面:1.5~2.5mm ² (美国线规16~14) 最大电流: I _{max} =27A 材质:紫铜 Lead Section: 1.5~2.5mm ² (A.W. G.16-14) Max Current:I _{max} =27A Material:Copper
SNB2-4L	#8	4.3									
SNB2-5S	#10	5.3									
SNB2-5L	#10	5.3									
SNB2-6S	1/4	6.5	9.5	6.5	16.0	5.0	4.0	2.3	0.8	1000	导线截面:1.5~2.5mm ² (美国线规16~14) 最大电流: I _{max} =27A 材质:紫铜 Lead Section: 1.5~2.5mm ² (A.W. G.16-14) Max Current:I _{max} =27A Material:Copper
SNB2-6L	1/4	6.5									
SNB2-8	5/16	8.5									
SNB2-8	5/16	8.5									

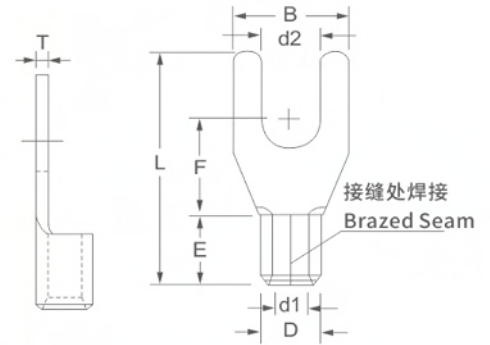
SNB Series

叉形裸端子
Non-Insulated Fork Terminal



型号 ITEM NO.	STUD SIZE 美制螺栓号 螺栓口直径		尺寸 DIMENSION mm							包装 PCS/ PACK	说明 EXPLANATION				
	American	Metric d2	B	F	L	E	D	d1	T						
SNB3.5-3	#4	3.2	8.0	7.0	18.3	6.0	5.0	3.0	1.0	1000	导线截面:2.5~4mm ² (美国线规14~12) 最大电流: I _{max} =37A 材质:紫铜 Lead Section: 2.5~4mm ² (A.W. G.14-12) Max Current: I _{max} =37A Material:Copper				
SNB3.5-3.5	#6	3.7													
SNB3.5-4	#8	4.3													
SNB3.5-5S	#10	5.3													
SNB3.5-6S	1/4	6.5	9.0	7.5	19.0										
SNB3.5-6L	1/4	6.5	12.0	9.1	21.5										
SNB3.5-8	5/16	8.5	14.0	11.5	23.8										
SNB3.5-10	3/8	10.5	17.5	12.5	26.5										
SNB5.5-3	#4	3.2	8.3	7.5	19.0	6.2	5.5	3.4	1.0			1000	导线截面:4~6mm ² (美国线规12~10) 最大电流: I _{max} =48A 材质:紫铜 Lead Section: 4~6mm ² (A.W. G.12-10) Max Current: I _{max} =48A Material:Copper		
SNB5.5-3.5	#6	3.7													
SNB5.5-4S	#8	4.3													
SNB5.5-4L	#8	4.3	8.9		19.3									6.6	5.8
SNB5.5-5	#10	5.3	9.0	19.0	6.2									5.5	3.4
SNB5.5-6S	1/4	6.5													
SNB5.5-6L	1/4	6.5	12.0	24.0											
SNB5.5-8	5/16	8.5								14.0	24.4				
SNB5.5-10	3/8	10.5	17.5	12.5	26.5										

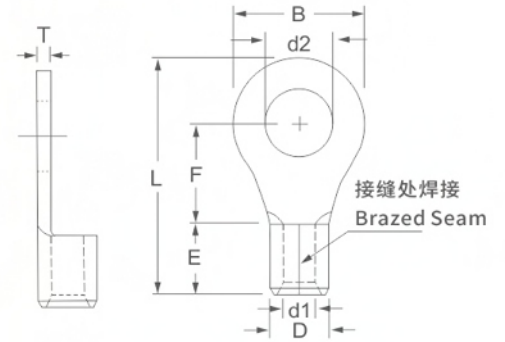
叉形裸端子
Non-Insulated Fork Terminal



型号 ITEM NO.	STUD SIZE 美制螺栓号 螺栓口直径		尺寸 DIMENSION mm							包装 PCS/ PACK	说明 EXPLANATION
	American	Metric d2	B	F	L	E	D	d1	T		
SNB8-4S	#8	4.3	8.0	7.2	23.0	8.6	7.2	4.5	1.2	500	导线截面:8~10mm ² (美国线规8) 最大电流: I _{max} =62A 材质:紫铜 Lead Section: 8~10mm ² (A.W. G.8) Max Current:I _{max} =62A Material:Copper
SNB8-4M	#8	4.3	9.0	7.5	23.8						
SNB8-4L	#8	4.3	10.5	9.0	23.0						
SNB8-5S	#10	5.3	9.0	7.5	21.2						
SNB8-5M	#10	5.3			23.8						
SNB8-5L	#10	5.3	10.8	7.2	23.0						
SNB8-6	1/4	6.5									
SNB8-8	5/16	8.5	14.5	11.0	28.0						
SNB8-10	3/8	10.5	16.0								
SNB14-4	#8	4.3	9.0	12.0	27.3	10.8	9.0	5.8	1.5	200	导线截面:10~16mm ² (美国线规6) 最大电流: I _{max} =88A 材质:紫铜 Lead Section: 10~16mm ² (A.W. G.6) Max Current:I _{max} =88A Material:Copper
SNB14-5	#10	5.3	11.0	10.2	28.2						
SNB14-6	1/4	6.5									
SNB14-8	5/16	8.5	13.8	10.7	28.5						
SNB14-10	3/8	10.5	15.9								
SNB22-5	#10	5.3	12.8	13.5	33.0	12.0	11.5	7.7	1.8	200	导线截面:16~25mm ² (美国线规4) 最大电流: I _{max} =115A 材质:紫铜 Lead Section: 16~25mm ² (A.W. G.4) Max Current:I _{max} =115A Material:Copper
SNB22-6	1/4	6.5									
SNB22-8S	5/16	8.5									
SNB22-8	5/16	8.5	16.5	13.7	33.5						
SNB22-10	3/8	10.5									

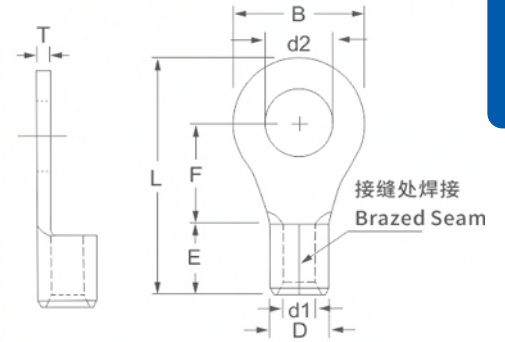
SNB Series

圆形裸端子
Non-Insulated Ring Terminal



型号 ITEM NO.	STUD SIZE 美制螺栓号 螺栓口直径		尺寸 DIMENSION mm							包装 PCS/ PACK	说明 EXPLANATION
	American	Metric d2	B	F	L	E	D	d1	T		
RNB0.5-3	#4	3.2	5.7	5.0	12.6	4.3	2.3	1.3	0.5	1000	导线截面:0.2~0.5mm ² (美国线规26~22) 最大电流: I _{max} =10A 材质:紫铜 Lead Section: 0.5~1.5mm ² (A.W. G.26-22) Max Current:I _{max} =10A Material:Copper
RNB0.5-3.5S	#6	3.7									
RNB0.5-3.5M	#6	3.7									
RNB0.5-4	#8	4.3									
RNB0.5-6	1/4	6.5	12.0	11.0	22.0						
RNB1.25-3	#4	3.2	5.7	5.0	12.8	4.8	3.4	1.8	0.7	1000	
RNB1.25-3.5S	#6	3.7									
RNB1.25-3.5M	#6	3.7									
RNB1.25-3.5L	#6	3.7									
RNB1.25-4S	#8	4.3									
RNB1.25-4L	#8	4.3									
RNB1.25-5S	#10	5.3									
RNB1.25-5L	#10	5.3									
RNB1.25-5LL	#10	5.3									
RNB1.25-6S	1/4	6.5									
RNB1.25-6L	1/4	6.5									
RNB1.25-8	5/16	8.5									
RNB1.25-8L	5/16	8.5									
RNB1.25-10	3/8	10.5									
RNB1.25-10L	3/8	10.5									
RNB1.25-12	1/2	13.0									
RNB1.25-14	9/16	15.0									
RNB1.25-16	5/8	17.0									
RNB1.25-18	11/16	19.0									
RNB1.25-20	3/4	21.0									
			11.6	11.3	21.8					500	导线截面:0.5~1.5mm ² (美国线规22~16) 最大电流: I _{max} =19A 材质:紫铜 Lead Section: 0.5~1.5mm ² (A.W. G.22-16) Max Current:I _{max} =19A Material:Copper

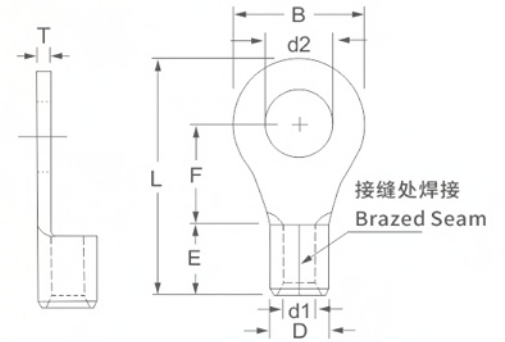
圆形裸端子
Non-Insulated Ring Terminal



RNB Series

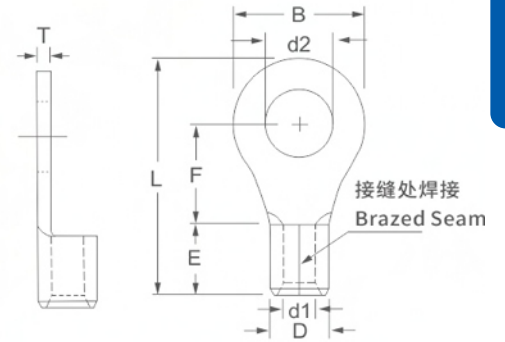
型号 ITEM NO.	STUD SIZE 美制螺栓号 螺栓口直径		尺寸 DIMENSION mm							包装 PCS/ PACK	说明 EXPLANATION
	American	Metric d2	B	F	L	E	D	d1	T		
RNB2-3	#4	3.2	6.6	4.3	12.5	5.0	4.0	2.3	0.8	1000	导线截面:1.5~2.5mm ² (美国线规16~14) 最大电流: I _{max} =27A 材质:紫铜 Lead Section: 1.5~2.5mm ² (A.W. G.16-14) Max Current:I _{max} =27A Material:Copper
RNB2-3.5S	#6	3.7		6.3	14.5						
RNB2-3.5M	#6	3.7		7.4	16.5						
RNB2-3.5L	#6	3.7	8.5	7.4	16.5						
RNB2-4S	#8	4.3	6.6	6.3	14.5						
RNB2-4L	#8	4.3	8.5	7.4	16.5						
RNB2-5S	#10	5.3	9.5	7.4	17.0						
RNB2-5L	#10	5.3									
RNB2-6S	1/4	6.5	12.0	11.0	21.5						
RNB2-6L	1/4	6.5									
RNB2-8	5/16	8.5									
RNB2-8L	5/16	8.5	13.6	13.9	25.5						
RNB2-10	3/8	10.5									
RNB2-10L	3/8	10.5	18.2	15.0	29.3						
RNB2-12	1/2	13.0									
RNB2-14	9/16	15.0	27.0	21.0	39.3				500		
RNB2-16	5/8	17.0									
RNB2-18	11/16	19.0									
RNB2-20	3/4	21.0									

圆形裸端子
Non-Insulated Ring Terminal



型号 ITEM NO.	STUD SIZE 美制螺栓号 螺栓口直径		尺寸 DIMENSION mm							包装 PCS/ PACK	说明 EXPLANATION
	American	Metric d2	B	F	L	E	D	d1	T		
RNB3.5-3	#4	3.2	8.0	8.0	18.0	6.0	5.0	3.0	1.0	1000	导线截面:2.5~4mm ² (美国线规14~12) 最大电流: I _{max} =37A 材质:紫铜 Lead Section: 2.5~4mm ² (A.W. G.14-12) Max Current:I _{max} =37A Material:Copper
RNB3.5-3.5	#6	3.7									
RNB3.5-4	#8	4.3									
RNB3.5-4M	#8	4.3	9.5	8.3	20.0						
RNB3.5-5S	#10	5.3	8.0	8.0	18.0						
RNB3.5-5M	#10	5.3	9.5	8.3	20.0						
RNB3.5-5L	#10	5.3	12.0	9.5	21.5						
RNB3.5-6	1/4	6.5	15.0	13.5	27.0						
RNB3.5-8	5/16	8.5									
RNB3.5-10	3/8	10.5									
RNB3.5-12	1/2	13.0	19.2	16.0	32.0						
RNB5.5-3	#4	3.2	7.2	6.0	15.8	6.2	5.5	3.4	1.0	1000	导线截面:4~6mm ² (美国线规12~10) 最大电流: I _{max} =48A 材质:紫铜 Lead Section: 4~6mm ² (A.W. G.12-10) Max Current:I _{max} =48A Material:Copper
RNB5.5-3.5	#6	3.7									
RNB5.5-4S	#8	4.3									
RNB5.5-4L	#8	4.3	9.5	8.2	19.2						
RNB5.5-5	#10	5.3	12.0	10.5	22.5						
RNB5.5-6	1/4	6.5		13.0	25.0						
RNB5.5-6M	1/4	6.5									
RNB5.5-8	5/16	8.5	15.0	13.5	27.0						
RNB5.5-10	3/8	10.5	19.2	16.0	32.0						
RNB5.5-12	1/2	13.0									
RNB5.5-14	9/16	15.0									
RNB5.5-16	5/8	17.0									
RNB5.5-18	11/16	19.0	32.0	25.2	47.2	500					
RNB5.5-20	3/4	21.0									

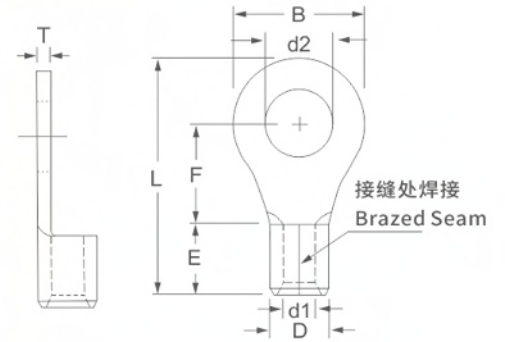
圆形裸端子
Non-Insulated Ring Terminal



RNB Series

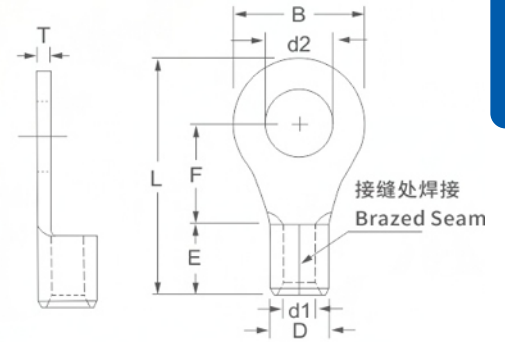
型号 ITEM NO.	STUD SIZE 美制螺栓号 螺栓口直径		尺寸 DIMENSION mm							包装 PCS/ PACK	说明 EXPLANATION
	American	Metric d2	B	F	L	E	D	d1	T		
RNB8-4SS	#8	4.3	8.0	9.5	21.5	8.6	7.2	4.5	1.2	500	导线截面:6~10mm ² (美国线规8) 最大电流: I _{max} =62A 材质:紫铜
RNB8-4S	#8	4.3	8.8	10.5	23.8						
RNB8-4L	#8	4.3	12.0	9.3	24.0						
RNB8-5S	#10	5.3	8.8	10.5	23.8						
RNB8-5M	#10	5.3	12.0	9.3	24.0						
RNB8-5L	#10	5.3	15.0	13.8	30.0						
RNB8-6S	1/4	6.5	12.0	9.3	24.0						
RNB8-6L	1/4	6.5	15.0	13.8	30.0						
RNB8-8	5/16	8.5									
RNB8-10	3/8	10.5									
RNB8-12	1/2	13.0	20.0	15.0	33.3						
RNB8-14	9/16	15.0	31.7	25.5	50.0						
RNB8-16	5/8	17.0									
RNB8-18	11/16	19.0									
RNB8-20	3/4	21.0									

圆形裸端子
Non-Insulated Ring Terminal



型号 ITEM NO.	STUD SIZE 美制螺栓号 螺栓口直径		尺寸 DIMENSION mm							包装 PCS/ PACK	说明 EXPLANATION
	American	Metric d2	B	F	L	E	D	d1	T		
RNB14-4SS	#8	4.3	12.1	11.5	27.4	10.8	9.0	5.8	1.5	200	导线截面:10~16mm ² (美国线规6) 最大电流: I _{max} =88A 材质:紫铜 Lead Section: 10~16mm ² (A.W. G.6) Max Current:I _{max} =88A Material:Copper
RNB14-4	#8	4.3	12.0	13.3	30.0						
RNB14-5SS	#10	5.3	12.1	11.5	27.4						
RNB14-5S	#10	5.3	12.0	13.3	30.0						
RNB14-5L	#10	5.3	16.0	14.2	33.0						
RNB14-6SS	1/4	6.5	12.1	11.5	27.4						
RNB14-6S	1/4	6.5	12.0	13.3	30.0						
RNB14-6L	1/4	6.5	16.0	14.2	33.0						
RNB14-8	5/16	8.5									
RNB14-10	3/8	10.5									
RNB14-12	1/2	13.0	22.0	19.8	41.0						
RNB14-14	9/16	15.0	31.7	25.5	51.6						
RNB14-16	5/8	17.0									
RNB14-18	11/16	19.0									
RNB14-20	3/4	21.0									

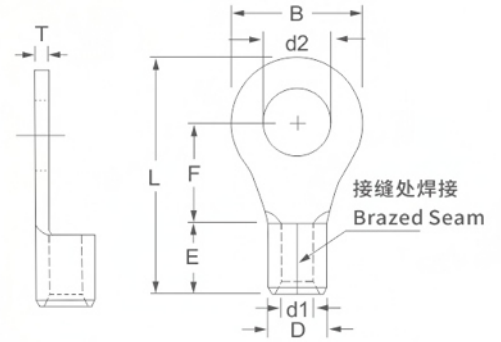
圆形裸端子
Non-Insulated Ring Terminal



RNB Series

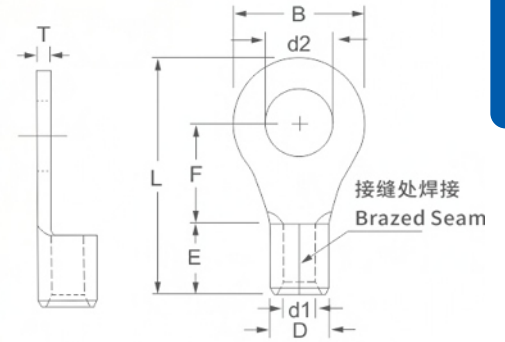
型号 ITEM NO.	STUD SIZE 美制螺栓号 螺栓口直径		尺寸 DIMENSION mm							包装 PCS/ PACK	说明 EXPLANATION
	American	Metric d2	B	F	L	E	D	d1	T		
RNB22-3S	#4	3.2	12.1	14.5	33.3	12.0	11.5	7.7	1.8	200	导线截面:16~25mm ² (美国线规4) 最大电流: I _{max} =115A 材质:紫铜
RNB22-4S	#8	4.3									
RNB22-5S	#10	5.3									
RNB22-5L	#10	5.3	16.5	13.5	33.5						
RNB22-6S	1/4	6.5	12.1	14.5	33.3						
RNB22-6L	1/4	6.5	16.5	13.5	33.5						
RNB22-8	5/16	8.5									
RNB22-10	3/8	10.5									
RNB22-12	1/2	13.0	22.0	19.7	42.7						
RNB22-14	9/16	15.0	31.7	24.5	52.0						
RNB22-16	5/8	17.0									
RNB22-18	11/16	19.0									
RNB22-20	3/4	21.0									

圆形裸端子
Non-Insulated Ring Terminal



型号 ITEM NO.	STUD SIZE 美制螺栓号 螺栓口直径		尺寸 DIMENSION mm							包装 PCS/ PACK	说明 EXPLANATION
	American	Metric d2	B	F	L	E	D	d1	T		
RNB38-5	#10	5.3	15.3	17.4	39.0	14.0	13.5	9.4	1.8	200	导线截面:35mm ² (美国线规2) 最大电流: I _{max} =160A 材质:紫铜
RNB38-6S	1/4	6.5									
RNB38-6L	1/4	6.5	22.0	17.7	42.7						
RNB38-8S	5/16	8.5	15.3	17.4	39.0						
RNB38-8L	5/16	8.5	22.0	17.7	42.7						
RNB38-10S	3/8	10.5	15.3	17.4	39.0						
RNB38-10L	3/8	10.5	22.0	17.7	42.7						
RNB38-11	7/16	11.5									
RNB38-12	1/2	13.0									
RNB38-14	9/16	15.0	31.7	23.5	52.0						
RNB38-16	5/8	17.0									
RNB38-18	11/16	19.0									
RNB38-20	3/4	21.0									

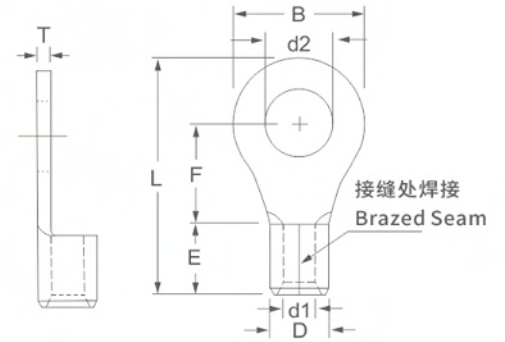
圆形裸端子
Non-Insulated Ring Terminal



型号 ITEM NO.	STUD SIZE 美制螺栓号 螺栓口直径		尺寸 DIMENSION mm							包装 PCS/ PACK	说明 EXPLANATION	
	American	Metric d2	B	F	L	E	D	d1	T			
RNB60-6	1/4	6.5	22.0	21.0	50.3	18.0	15.5	11.5	1.8	100	导线截面:50mm ² (美国线规1/0) 最大电流: I _{max} =215A 材质:紫铜	
RNB60-8	5/16	8.5										
RNB60-10	3/8	10.5										
RNB60-11	7/16	11.5										
RNB60-12	1/2	13.0										
RNB60-14	9/16	15.0	32.0	23.5	57.5	18.0	17.5	13.3	2.0	50		Lead Section: 50mm ² (A.W. G.1/0) Max Current:I _{max} =215A Material:Copper
RNB60-16	5/8	17.0										
RNB60-18	11/16	19.0										
RNB60-20	3/4	21.0										
RNB60-22	7/8	23.0										
RNB70-6	1/4	6.5	24.0	20.0	50.0	18.0	17.5	13.3	2.0	100	导线截面:70mm ² (美国线规2/0) 最大电流: I _{max} =235A 材质:紫铜	
RNB70-8	5/16	8.5										
RNB70-10	3/8	10.5										
RNB70-11	7/16	11.5										
RNB70-12	1/2	13.0										
RNB70-14	9/16	15.0	32.0	26.0	61.0	18.0	17.5	13.3	2.0	50		Lead Section: 70mm ² (A.W. G.2/0) Max Current:I _{max} =235A Material:Copper
RNB70-16	5/8	17.0										
RNB70-18	11/16	19.0										
RNB70-20	3/4	21.0										
RNB70-22	7/8	23.0										

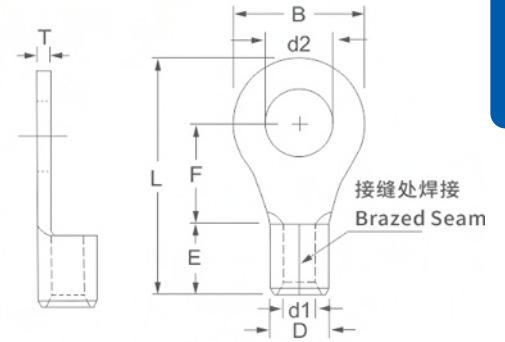
RNB Series

圆形裸端子
Non-Insulated Ring Terminal



型号 ITEM NO.	STUD SIZE 美制螺栓号 螺栓口直径		尺寸 DIMENSION mm							包装 PCS/ PACK	说明 EXPLANATION						
	American	Metric d2	B	F	L	E	D	d1	T								
RNB80-6	1/4	6.5	27.0	20.7	54.2	20.0	19.5	14.5	2.3	50	导线截面:95mm ² (美国线规3/0) 最大电流: I _{max} =255A 材质:紫铜						
RNB80-8	5/16	8.5															
RNB80-10	3/8	10.5															
RNB80-11	7/16	11.5															
RNB80-12	1/2	13.0															
RNB80-14	9/16	15.0	32.0	32.0	68.0							21.5	22.2	16.5	2.8	50	Lead Section: 95mm ² (A.W. G.3/0) Max Current:I _{max} =255A Material:Copper
RNB80-16	5/8	17.0															
RNB80-18	11/16	19.0															
RNB80-20	3/4	21.0															
RNB80-22	7/8	23.0															
RNB100-6	1/4	6.5				28.5	20.4	55.6	21.5	22.2	16.5						
RNB100-8	5/16	8.5															
RNB100-10	3/8	10.5															
RNB100-11	7/16	11.5															
RNB100-12	1/2	13.0															
RNB100-14	9/16	15.0	32.0	32.0	69.0	21.5	22.2	16.5				2.8	50	Lead Section: 120mm ² (A.W. G.4/0) Max Current:I _{max} =300A Material:Copper			
RNB100-16	5/8	17.0															
RNB100-18	11/16	19.0															
RNB100-20	3/4	21.0															
RNB100-22	7/8	23.0															

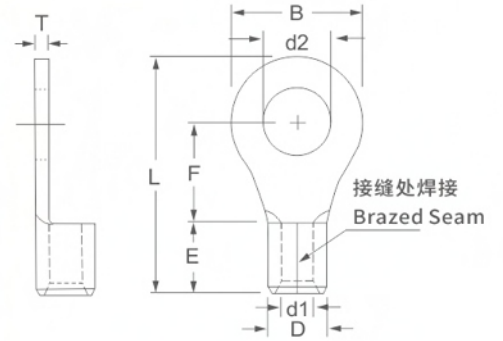
圆形裸端子
Non-Insulated Ring Terminal



型号 ITEM NO.	STUD SIZE 美制螺栓号 螺栓口直径		尺寸 DIMENSION mm							包装 PCS/ PACK	说明 EXPLANATION
	American	Metric d2	B	F	L	E	D	d1	T		
RNB150-8	5/16	8.5	36.0	23.0	68.0	27.0	26.8	20.2	3.2	25	导线截面:150mm ² (美国线规250/300MCB) 最大电流: I _{max} =395A 材质:紫铜 Lead Section: 150mm ² (A.W. G.250/300MCB) Max Current:I _{max} =395A Material:Copper
RNB150-10	3/8	10.5									
RNB150-11	7/16	11.5									
RNB150-12	1/2	13.0									
RNB150-14	9/16	15.0									
RNB150-16	5/8	17.0									
RNB150-18	11/16	19.0	36.0	36.6	81.0	28.5	28.6	21.5	3.5	20	
RNB150-20	3/4	21.0									
RNB150-22	7/8	23.0									
RNB150-24	15/16	25.0									
RNB150-27	1	28.0									
RNB180-8	5/16	8.5									
RNB180-10	3/8	10.5	38.5	26.0	72.0	28.5	28.6	21.5	3.5	20	导线截面:185mm ² (美国线规300/350MCB) 最大电流: I _{max} =440A 材质:紫铜 Lead Section: 185mm ² (A.W. G.300/350MCB) Max Current:I _{max} =440A Material:Copper
RNB180-11	7/16	11.5									
RNB180-12	1/2	13.0									
RNB180-14	9/16	15.0									
RNB180-16	5/8	17.0									
RNB180-18	11/16	19.0									
RNB180-20	3/4	21.0	38.5	39.0	86.6	28.5	28.6	21.5	3.5	20	
RNB180-22	7/8	23.0									
RNB180-24	15/16	25.0									
RNB180-27	1	28.0									

BNB Series

圆形裸端子
Non-Insulated Ring Terminal

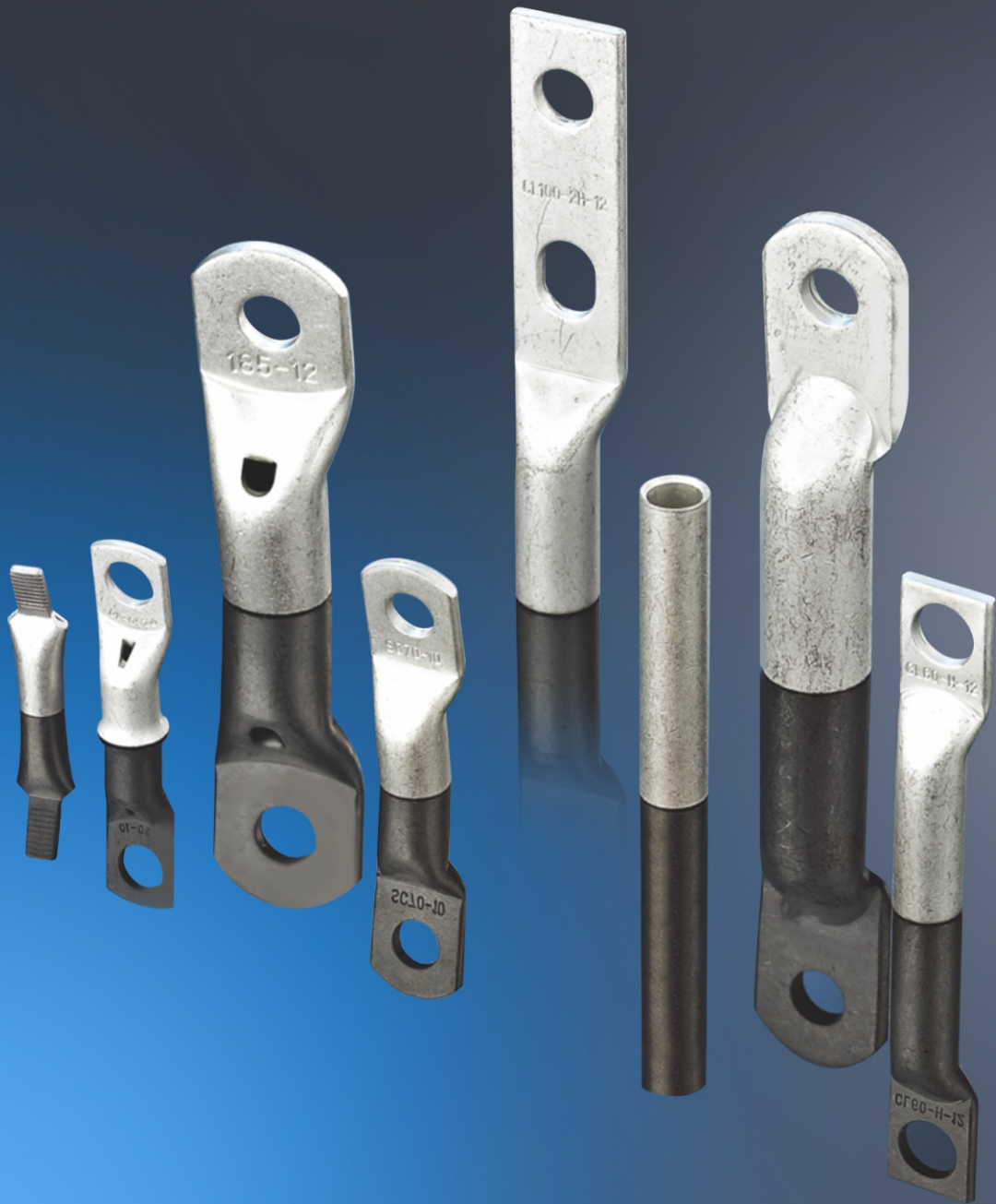


型号 ITEM NO.	STUD SIZE 美制螺栓号 螺栓口直径		尺寸 DIMENSION mm							包装 PCS/ PACK	说明 EXPLANATION
	American	Metric d2	B	F	L	E	D	d1	T		
RNB200-8	5/16	8.5	44.0	24.5	77.8	31.5	32.8	24.6	4.0	10	导线截面:240mm ² (美国线规400/500MCB) 最大电流: I _{max} =470A 材质:紫铜 Lead Section:240mm ² (A.W. G.400/500MCB) Max Current:I _{max} =470A Material:Copper
RNB200-10	3/8	10.5									
RNB200-11	7/16	11.5									
RNB200-12	1/2	13.0									
RNB200-14	9/16	15.0									
RNB200-16	5/8	17.0									
RNB200-18	11/16	19.0	44.0	37.5	91.0	35.8	37.8	28.6	4.3	5	
RNB200-20	3/4	21.0									
RNB200-22	7/8	23.0									
RNB200-24	15/16	25.0									
RNB200-27	1	28.0									
RNB200-27	1	28.0									
RNB325-8	5/16	8.5	50.5	33.5	94.0	35.8	37.8	28.6	4.3	5	导线截面:400mm ² (美国线规500/600MCB) 最大电流: I _{max} =650A 材质:紫铜 Lead Section:400mm ² (A.W. G.500/600MCB) Max Current:I _{max} =650A Material:Copper
RNB325-10	3/8	10.5									
RNB325-11	7/16	11.5									
RNB325-12	1/2	13.0									
RNB325-14	9/16	15.0									
RNB325-16	5/8	17.0									
RNB325-18	11/16	19.0	50.5	45.0	105.7	35.8	37.8	28.6	4.3	5	
RNB325-20	3/4	21.0									
RNB325-22	7/8	23.0									
RNB325-24	15/16	25.0									
RNB325-27	1	28.0									
RNB325-27	1	28.0									

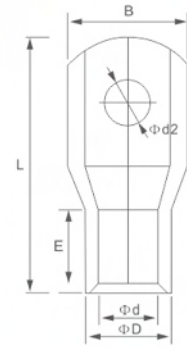
THOR

铜管端子系列

SC Cable Lug Series

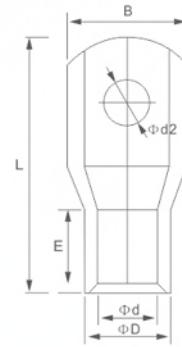


铜管端子
SC Cable Lug



型号 ITEM NO.	STUD SIZE 美制螺栓号 螺栓口直径		尺寸 DIMENSION mm						包装 PCS/ PACK
	American	Metric d2	B	L	E	D	d1	T	
SC1.5-4	#8	4.3	7.5	18.0	5.0	3.5	2.1	0.7	1000
SC1.5-5	#10	5.3							
SC1.5-6	1/4	6.5							
SC2.5-4	#8	4.3	7.5	20.0	7.0	4.0	2.6	0.7	1000
SC2.5-5	#10	5.3							
SC2.5-6	1/4	6.5							
SC4-4	#8	4.3	10.2	20.4	8.0	4.8	3.4	0.7	1000
SC4-5	#10	5.3							
SC4-6	1/4	6.5							
SC4-8	5/16	8.5	12.5	23.0					
SC6-4	#8	4.3	11.0	24.5	10.0	5.5	3.9	0.8	1000
SC6-5	#10	5.3							
SC6-6	1/4	6.5							
SC6-8	5/16	8.5	11.8	26.4					
SC6-10	3/8	10.5	15.0	28.0		6.2	4.0		
SC10-4	#8	4.3	12.0	25.2	10.0	6.5	4.9	0.8	500
SC10-5	#10	5.3							
SC10-6	1/4	6.5							
SC10-8	5/16	8.5							
SC10-10	3/8	10.5							

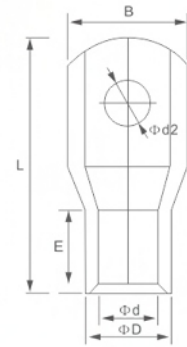
铜管端子
SC Cable Lug



型号 ITEM NO.	STUD SIZE 美制螺栓号 螺栓口直径		尺寸 DIMENSION mm						包装 PCS/ PACK					
	American	Metric d2	B	L	E	D	d1	T						
SC16-4	#8	4.3	12.3	30.0	11.5	7.5	5.7	0.9	500					
SC16-5	#10	5.3												
SC16-6	1/4	6.5												
SC16-8	5/16	8.5												
SC16-10	3/8	10.5	15.0	33.0	11.6	9.0	7.2	0.9						
SC16-12	1/2	13.0	17.0											
SC25-4	#8	4.3	13.3	32.8						11.6	9.0	7.2	0.9	200
SC25-5	#10	5.3												
SC25-6	1/4	6.5												
SC25-8	5/16	8.5												
SC25-10	3/8	10.5	15.0	34.6					11.6	9.5	7.5	0.9		
SC25-12	1/2	13.0	18.0	35.0										
SC25-14	9/16	15.0	20.0	38.0										
SC35-5	#10	5.3	15.3	37.8									14.0	
SC35-6	1/4	6.5												
SC35-8	5/16	8.5												
SC35-10	3/8	10.5												
SC35-12	1/2	13.0			19.0	40.0								
SC35-14	9/16	15.0			20.0	42.0								

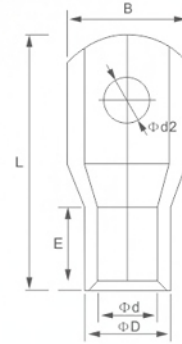
SC Series

铜管端子
SC Cable Lug



型号 ITEM NO.	STUD SIZE 美制螺栓号 螺栓口直径		尺寸 DIMENSION mm						包装 PCS/ PACK
	American	Metric d2	B	L	E	D	d1	T	
SC50-6	1/4	6.5	18.3	45.0	16.0	12.5	9.9	1.3	100
SC50-8	5/16	8.5							
SC50-10	3/8	10.5							
SC50-12	1/2	13.0							
SC50-14	9/16	15.0	22.0	46.0	19.0	15.0	11.8	1.6	
SC50-16	5/8	17.0	24.0	47.0					
SC70-6	1/4	6.5	21.8	51.0					
SC70-8	5/16	8.5							
SC70-10	3/8	10.5							
SC70-12	1/2	13.0							
SC70-14	9/16	15.0							
SC70-16	5/8	17.0	25.0	53.0	23.0	17.4	13.6	1.9	50
SC95-6	1/4	6.5	25.0	58.0					
SC95-8	5/16	8.5							
SC95-10	3/8	10.5							
SC95-12	1/2	13.0							
SC95-14	9/16	15.0							
SC95-16	5/8	17.0							

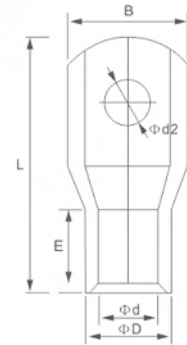
铜管端子
SC Cable Lug



型号 ITEM NO .	STUD SIZE 美制螺栓号 螺栓口直径		尺寸 DIMENSION mm						包装 PCS/ PACK
	American	Metric d2	B	L	E	D	d1	T	
SC120-6	1/4	6.5	28.0	63.0	22.0	19.4	15.2	2.1	50
SC120-8	5/16	8.5							
SC120-10	3/8	10.5							
SC120-12	1/2	13.0							
SC120-14	9/16	15.0							
SC120-16	5/8	17.0							
SC120-20	3/4	21.0							
SC150-8	5/16	8.5	30.4	70.0	26.0	21.2	16.6	2.3	20
SC150-10	3/8	10.5							
SC150-12	1/2	13.0							
SC150-14	9/16	15.0							
SC150-16	5/8	17.0							
SC150-20	3/4	21.0							
SC185-10	3/8	10.5	34.0	75.0	32.0	23.5	18.7	2.4	20
SC185-12	1/2	13.0							
SC185-14	9/16	15.0							
SC185-16	5/8	17.0							
SC185-20	3/4	21.0							

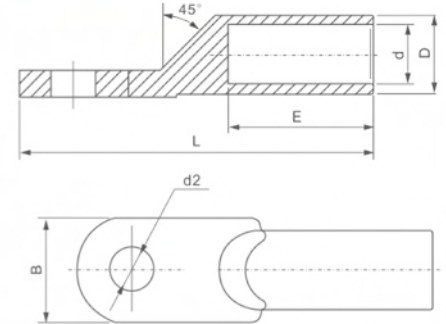
SC Series

铜管端子
SC Cable Lug



型号 ITEM NO.	STUD SIZE 美制螺栓号 螺栓口直径		尺寸 DIMENSION mm						包装 PCS/ PACK
	American	Metric d2	B	L	E	D	d1	T	
SC240-10	3/8	10.5	38.0	90.0	38.0	26.5	21.3	2.6	10
SC240-12	1/2	13.0							
SC240-14	9/16	15.0							
SC240-16	5/8	17.0							
SC240-20	3/4	21.0							
SC300-10	3/8	10.5	43.5	98.0	42.0	30.0	24.0	3.0	5
SC300-12	1/2	13.0							
SC300-14	9/16	15.0							
SC300-16	5/8	17.0							
SC300-20	3/4	21.0							
SC400-10	3/8	10.5	52.0	110.0	44.0	36.5	28.5	4.0	2
SC400-12	1/2	13.0							
SC400-14	9/16	15.0							
SC400-16	5/8	17.0							
SC400-20	3/4	21.0							
SC500-10	3/8	10.5	56.0	120.0	48.0	39.0	30.0	4.5	2
SC500-12	1/2	13.0							
SC500-14	9/16	15.0							
SC500-16	5/8	17.0							
SC500-20	3/4	21.0							
SC630-10	3/8	10.5	65.0	140.0	56.0	45.0	35.0	5.0	2
SC630-12	1/2	13.0							
SC630-14	9/16	15.0							
SC630-16	5/8	17.0							
SC630-20	3/4	21.0							

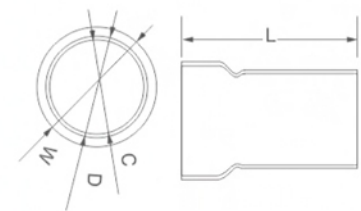
DT系列铜接线端子
Copper Connecting Terminals



DT Series

型号 ITEM NO.	尺寸 DIMENSION mm					
	d2	B	L	E	D	d
DT-10	8.5	16	62	28	9	5.5
DT-16	8.5	16	68	32	10	6.5
DT-25	8.5	18	70	33	11	7.4
DT-35	10.5	20.5	80	37	12	8.4
DT-50	10.5	23	85	39	14	10.0
DT-70	13	26	95	43	16	11.8
DT-95	13	28	104	49	18	13.5
DT-120	13	30	112	49	20	15.0
DT-150	13	32.5	102	52	23	17.0
DT-185	17	37	125	55	25	19.0
DT-240	17	40	136	62	27	21.0
DT-300	22	50	158	68	31	23.5
DT-400	22	50	176	80	34	27.0
DT-500	22	60	186	82	38	29.2

双压式铜套
Double Crimp Tube



型号 ITEM NO.	导线面积 WIRE SECTION		尺寸 DIMENSION mm				包装 PCS/ PACK
	A. W. G	mm ²	L	D	C	W	
T-0.5	#22	0.5	7.5	2.7	2.3	3.7	500
T-0.75	#20	0.75	7.5	3.0	2.7	4.1	500
T-1.25	#18	1.25	8.5	3.7	3.3	4.6	500
T-2.5	#16	2.0	8.5	4.3	3.9	5.3	500
T-3.5	#14	3.5	9.5	5.0	4.5	5.9	500
T-5.5	#12	5.5	9.5	6.0	5.4	7.0	500

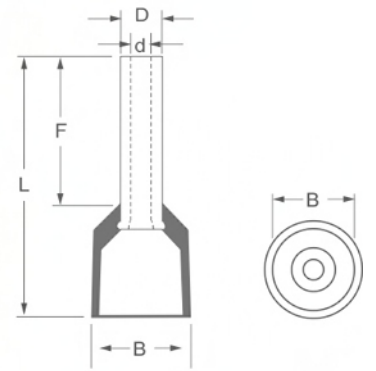
THOR

管形端子系列

Ferrule Terminal Series

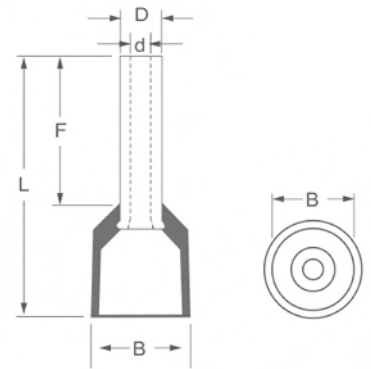


单线管形绝缘端子
Ferrule Terminal



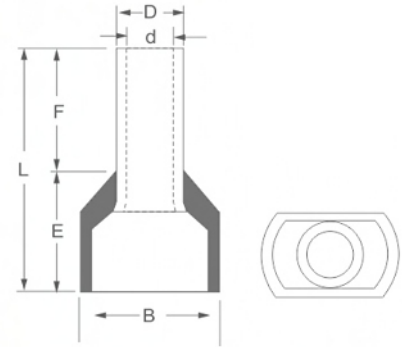
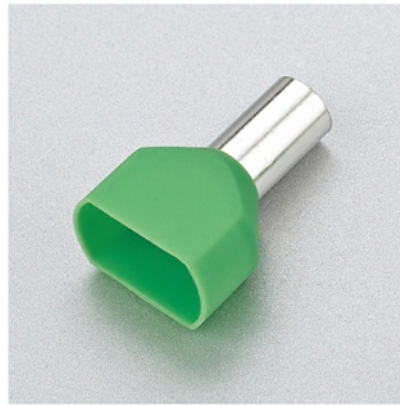
型号 ITEM NO.	导线面积 WIRE SECTION		尺寸 DIMENSION mm					包装 PCS/ PACK	颜色 COLOR	说明 EXPLANATION
	A. W. G	mm ²	F	L	B	D	d			
E 0206	#26	0.25	6.0	10.5	2.7	1.0	0.7	1000	淡蓝色 Light Blue	材质:紫铜管 绝缘材质: PVC(多种颜色) / 尼龙(PA66) Material:Copper Insulating Material: PVC(Colors) / Nylon(PA66)
E 0208			8.0	12.5						
E 0306	#24	0.34	6.0	10.5	2.7	1.1	0.8	1000	青绿色 Light Green	
E 0308			8.0	12.5						
E 0506	#22	0.5	6.0	12.0	3.4	1.3	1.0	1000	橘黄色 Orange	
E 0508			8.0	14.0						
E 0510			10.0	16.0						
E 0512			12.0	18.0						
E 7506	#20	0.75	6.0	12.4	3.6	1.5	1.2	1000	白色 White	
E 7508			8.0	14.6						
E 7510			10.0	16.4						
E 7512			12.0	18.4						
E 1006	#18	1.0	6.0	12.4	3.8	1.8	1.5	1000	蓝色 Blue	
E 1008			8.0	14.6						
E 1010			10.0	16.4						
E 1012			12.0	18.4						
E 1508	#16	1.5	8.0	15.2	4.3	2.0	1.7	1000	黄色 yellow	
E 1510			10.0	17.2						
E 1512			12.0	19.2						
E 1518			18.0	25.2						
E 2508	#14	2.5	8.0	15.7	5.0	2.6	2.3	1000	红色 Red	
E 2510			10.0	17.7						
E 2512			12.0	19.7						
E 2518			18.0	25.7						

单线管形绝缘端子
Ferrule Terminal



型号 ITEM NO.	导线面积 WIRE SECTION		尺寸 DIMENSION mm					包装 PCS/ PACK	颜色 COLOR	说明 EXPLANATION
	A. W. G	mm ²	F	L	B	D	d			
E 4009	#12	4.0	9.0	16.5	5.7	3.2	2.8	1000	淡蓝色 Light Blue	材质:紫铜管 绝缘材质: PVC(多种颜色) / 尼龙(PA66) Material:Copper Insulating Material: PVC(Colors) / Nylon(PA66)
E 4012			12.0	19.5						
E 4018			18.0	25.5						
E 6010	#10	6.0	10.0	19.0	7.4	3.9	3.5	1000	青绿色 Light Green	
E 6012			12.0	21.0						
E 6018			18.0	27.0						
E 10-12	#7	10.0	12.0	22.0	8.3	4.9	4.5	1000	橘黄色 Orange	
E 10-18			18.0	28.0						
E 16-12	#5	16.0	12.0	22.2	9.7	6.2	5.8	500	白色 White	
E 16-18			18.0	28.2						
E 25-16	#4	25.0	16.0	28.0	11.9	7.9	7.5	200	蓝色 Blue	
E 25-22			22.0	34.0						
E 35-16	#2	35.0	16.0	29.5	13.0	8.7	8.3	200	黄色 yellow	
E 35-25			25.0	38.5						
E 50-20	#1	50.0	20.0	35.0	15.7	10.9	10.3	200	红色 Red	
E 50-25			25.0	40.0						
E 70-20	2/0	70.0	20.0	37.0	18.0	14.3	13.5	200	黑色 Black	
E 70-25			25.0	42.0						
E 70-27			27.0	44.0						
E 95-25	3/0	95.0	25.0	45.0	19.5	15.3	14.5	50	绿色 Green	
E 120-27	4/0	120.0	27.0	47.0	20.3	17.5	16.5	50	乳白色 Iroy	
E 120-32			32.0	52.0						
E 150-25	250/ 300	150.0	25.0	49.0	25.0	20.5	19.6	25	褐色 Brown	
E 150-27			27.0	51.0						
E 150-32			32.0	56.0						

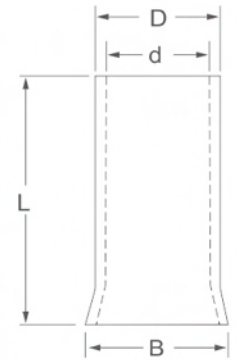
双线管形绝缘端子
Twin Terminal



型号 ITEM NO.	导线面积 WIRE SECTION mm ²	尺寸 DIMENSION mm						包装 PCS/ PACK	颜色 COLOR	说明 EXPLANATION
		F	L	E	B	D	d			
TE 0508	2×0.5	8.0	14.8	6.8	5.8	1.8	1.5	1000	淡蓝色 Light Blue	材质:紫铜管 绝缘材质: PVC(多种颜色) / 尼龙(PA66) Material:Copper Insulating Material: PVC(Colors) / Nylon(PA66)
TE 7508	2×0.75	8.0	15.2	7.2	6.2	2.1	1.8	1000	青绿色 Light Green	
TE 7510	2×0.75	10.0	17.2	7.2	6.2	2.1	1.8	1000	橘黄色 Orange	
TE 1008	2×1.0)	8.0	15.0	7.0	6.4	2.4	2.1	1000	白色 White	
TE1010	2×1.0	10.0	17.0	7.0	6.4	2.4	2.1	1000	蓝色 Blue	
TE 1508	2×1.5	8.0	16.0	8.0	7.2	2.6	2.3	1000	黄色 yellow	
TE 1512	2×1.5	12.0	20.0	8.0	7.2	2.6	2.3	1000	红色 Red	
TE 2510	2×2.5	10.0	19.5	8.5	8.7	3.3	2.9	1000	黑色 Black	
TE 2513	2×2.5	13.0	22.5	8.5	8.7	3.3	2.9	1000	绿色 Green	
TE 4012	2×4.0	12.0	22.5	10.5	9.6	4.2	3.8	1000	乳白色 Iroy	
TE 6014	2×6.0	14.0	25.2	11.2	10.4	5.3	4.9	500	褐色(棕色) Brown	
TE 10-14	2×10.0	14.0	26.3	12.5	13.6	6.9	6.5	200		
TE 16-14	2×16.0	14.0	31.2	17.2	20.0	8.7	8.3	200		

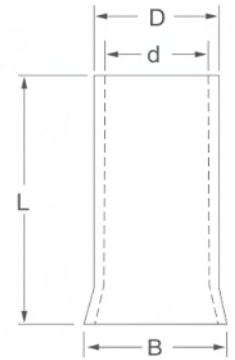
TE Series

管形裸端子
Non-Insulated Ferrule Terminal



型号 ITEM NO.	导线面积 WIRE SECTION		尺寸 DIMENSION mm				包装 PCS/ PACK
	A. W. G	mm ²	L	B	D	d	
EN 0206	#26	0.2	6.0	1.4	1.0	0.7	2000
EN 0207			7.0				
EN 0208			8.0				
EN 0306	#24	0.3	6.0	1.5	1.1	0.8	2000
EN 0308			8.0				
EN 0505	#22	0.5	5.0	1.7	1.3	1.0	2000
EN 0506			6.0				
EN 0508			8.0				
EN 0510			10.0				
EN 0512			12.0				
EN 7506	#20	0.75	6.0	1.9	1.5	1.2	2000
EN 7508			8.0				
EN 7510			10.0				
EN 7512			12.0				
EN 1006	#18	1.0	6.0	2.2	1.8	1.5	2000
EN 1008			8.0				
EN 1010			10.0				
EN 1012			12.0				
EN 1507	#16	1.5	7.0	2.5	2.0	1.7	2000
EN 1508			8.0				
EN 1510			10.0				
EN 1512			12.0				
EN 1518			18.0				

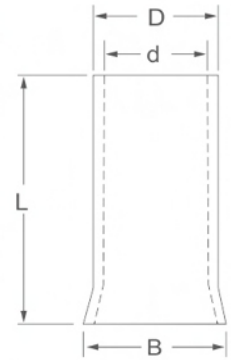
管形裸端子
Non-Insulated Ferrule Terminal



EN Series

型号 ITEM NO.	导线面积 WIRE SECTION		尺寸 DIMENSION mm				包装 PCS/ PACK
	A. W. G	mm ²	L	B	D	d	
EN 2507	#14	2.5	7.0	3.3	2.6	2.3	2000
EN 2508			8.0				
EN 2510			10.0				
EN 2512			12.0				
EN 2518			18.0				
EN 4009	#12	4.0	9.0	3.9	3.2	2.8	2000
EN 4012			12.0				
EN 4018			18.0				
EN 6010	#10	6.0	10.0	4.8	3.9	3.5	1000
EN 6012			12.0				
EN 6015			15.0				
EN 6018			18.0				
EN 10-12	#7	10.0	12.0	5.8	4.9	4.5	1000
EN 10-15			15.0				
EN 10-18			18.0				
EN 16-12	#5	16.0	12.0	7.2	6.2	5.8	1000
EN 16-15			15.0				
EN 16-18			18.0				
EN 25-16	#4	25.0	16.0	9.1	7.9	7.5	500
EN 25-22			22.0				
EN 35-16	#2	35.0	16.0	10.2	8.7	8.3	500
EN 35-25			25.0				

管形裸端子
Non-Insulated Ferrule Terminal



型号 ITEM NO.	导线面积 WIRE SECTION		尺寸 DIMENSION mm				包装 PCS/ PACK
	A. W. G	mm ²	L	B	D	d	
EN 50-20	1/0	50.0	20.0	12.7	10.9	10.3	200
EN 50-25			25.0				
EN 50-30			30.0				
EN 50-32			32.0				
EN 70-22	2/0	70.0	22.0	15.8	14.3	13.5	200
EN 70-25			25.0				
EN 70-30			30.0				
EN 70-32			32.0				
EN 95-25	3/0	95.0	25.0	17.3	15.3	14.5	100
EN 95-30			30.0				
EN 95-32			32.0				
EN 95-34			34.0				
EN 120-30	4/0	120.0	30.0	20.2	17.5	16.5	100
EN 120-32			32.0				
EN 120-34			34.0				
EN 120-38			38.0				
EN 120-40			40.0				
EN 150-32	250/300	150.0	32.0	23.0	20.6	19.6	50
EN 150-34			34.0				
EN 150-38			38.0				
EN 150-40			40.0				
EN 185-32	250/300	185.0	32.0	23.9	21.4	20.2	25
EN 185-40			40.0				

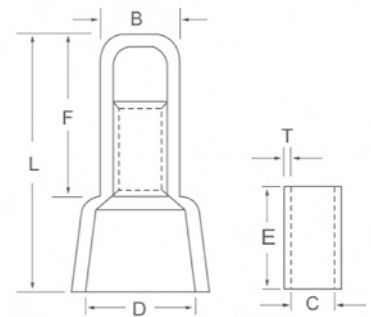
THOR

配线器材料系列

Wire Accessories Series

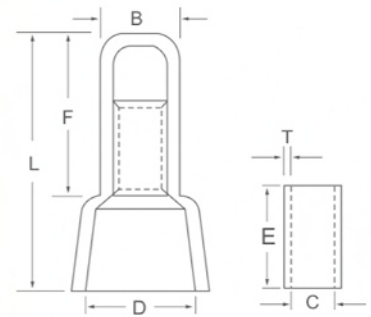


终端绝缘接头
Closed End Connector



型号 ITEM NO .	STUD SIZE 螺栓口直径 美制螺栓号	尺寸 DIMENSION mm						包装 PCS/PACK	颜色 COLOR
	mm ² (A.W.G.)	B	L	F	D	T	C		
CE1.25	0.5-1.5(22-16)	4.5	18.0	10.0	5.5	0.5	2.3	1000	○ 白 White
CE2	1.5-2.5(16-14)	5.0	19.8	11.0	7.5	0.45	3.1	1000	
CE5.5	4-6(12-10)	7.0	25.0	14.0	10.0	0.7	4.0	500	
CE8	6-10(8)	9.5	30.0	19.0	12.0	1.25	4.4	500	

终端绝缘接头
Closed End Connector



型号 ITEM NO .	STUD SIZE 螺栓口直径 美制螺栓号	尺寸 DIMENSION mm						包装 PCS/PACK	颜色 COLOR
	mm ² (A.W.G.)	B	L	F	D	T	C		
CEF2216	0.5-1.5(22-16)	5.0	15.3	6.3	9.0	0.4	2.4	1000	● 红 Red
CEF2214	1.5-2.5(16-14)	5.7	18.3	8.3	9.1	0.4	3.1	1000	● 蓝 Blue
CEF1810	4-6(12-10)	8.0	20.0	10.0	12.0	0.75	4.5	500	● 黄 Yellow