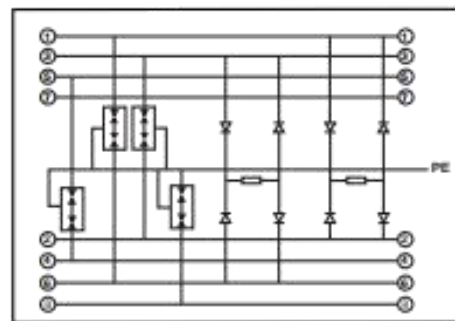
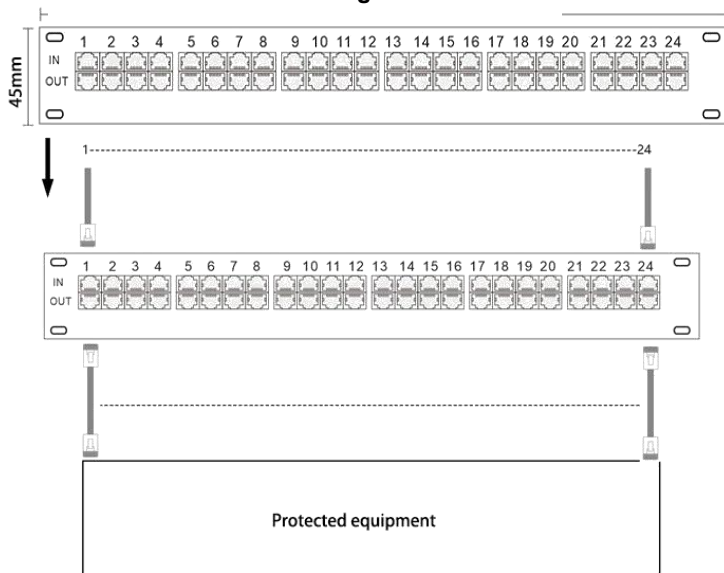


**TRSS-RJ45 PoE Rack network surge protective device**

TRSS-RJ45 series signal surge protective device are specially used for various computer network such as Ethernet network(LAN), its satisfied different types lightning –proof areas, the connector of its input and output is RJ45 female connector, which is easily connected and installed ,and it is main used in server equipment, working station(intranet)and router, HUB and board band RJ45 interface protection for protecting equipment, which will damaged by the over voltage of the earth or the line inductance.

**Features:**

1. Cat6 and POE RJ45 network data protector
2. High discharge capability and fast response time
3. Strong protection ability and high reliability
4. With a variety of protection functions: power and network signals

**Product and circuit diagram:****Dimension and install diagram:**

Product model	TRSS-RJ45 POE	
Number of ports	16ports	24ports
In accordance with	IEC 61643-21, EN61643-21	
Pin 1/2/3/6 Network input Voltage (Vdc) :	5	
Pin 4/5/7/8 PoE Voltage (Vdc) :	48	
Normal discharge current (8/20us)kA. : In	5	
Max discharge current (8/20us)kA. : Imax	10	
Voltage protection level	60V	
Insertion loss	≤0.5dB	
Response time	Instantaneous	
Transmission Speed	1000M bps	
Type of connection In/Out	RJ45 Female / Female	
Protective line	Data:1,2,3,6; PoE:4,5,7,8	
Connection Type	Series	
Mounting	Flange	
Material	Aluminum	
Dimension (mm.)	490Lx127Wx45H	
Operating temperature range	-40℃ to +70℃	
Environmental protection	IP20	